

The **BLOONDE** Connection



2008
Volume 5



*Photo
Contest
Winners!*

WEST WIND

Blondes

129N HERD

**Specializing in Polled
Fullblood Blonde
d'Aquitaine**

*Quality Breeding Stock Available
by Private Treaty Year 'Round*

West Wind Blondes

Shirley Bilton • Myrna Flesch

Box 334, Stavely, AB T0L 1Z0

Ph: 403.549.2371 Fax: 403.549.2374

Email: westwind@telusplanet.net

www.telusplanet.net/public/westwind

The **BLONDE** Connection

The official publication of the Canadian
Blonde d'Aquitaine Association

2417 Holly Lane, Ottawa, ON K1V 0M7
Phone: (613) 731-7110
Fax: (613) 731-0704
Email: cbda@clrc.ca
www.canadianblondeassociation.ca

PUBLISHER:

The Canadian Blonde d'Aquitaine
Association

EDITOR:

Gloria Fantin, Fantin AgMarketing Inc.
Phone: (403) 289-3836
Fax: (403) 289-3886
Email: fantinagmarketing@gmail.com
www.fantinagmarketing.ca

ART DIRECTION/

ELECTRONIC COMPOSITION:

Sid Leavitt, Coyote Lake Cattle Co.
Phone: (403) 653-2450
Fax: (403) 653-3527
Email: sid@coyotepub.com
www.coyotepub.com

Printed in Canada

MEMBER ADVERTISING RATES:

Full Page	\$400
Full Page Full Colour	\$700
2/3 Page	\$300
1/2 Page	\$225
1/2 Page Full Colour	\$375
1/3 Page	\$175
1/4 Page	\$140
1/4 Page Full Colour	\$215
1/6 Page	\$100
Card Ad	\$50
IFC, IBC, OBC	
Full Colour	\$740

ADDITIONAL CHARGES:

Production and ad copy changes are
subject to extra charges.
Taxes.

CIRCULATION: 2,000

TERMS:

All accounts are due and payable as invoiced.
Interest charges 2 percent per month (24%
per annum) will be assessed to accounts 30
days past due. Please make cheques payable
to The Canadian Blonde d'Aquitaine
Association

The Official Publication of the Canadian Blonde d'Aquitaine Association

IN THIS ISSUE.....

Canadian Blonde d'Aquitaine Association President Report	2
Canadian Blonde d'Aquitaine Association Office and	
Canadian Livestock Records Corporation Report	3
Alberta Blonde d'Aquitaine Association Report	4
Canadian Blonde d'Aquitaine Association Membership Directory ..7 - 14	
Business Card Directory	15
What's Bred in the Beef	16 - 17
Man-Sask Blonde d'Aquitaine Association Report	18
Canadian Blonde d'Aquitaine Association Sire Summary	19 - 29
Ontario Blonde d'Aquitaine Association Report	30
Canadian Cattlemen's Association State of the Industry	33
Canadian Cattle Identification Agency Value Added Initiatives	34
Association Blonde d'Aquitaine du Québec	35
Advertiser Index	35
Canadian Blonde d'Aquitaine Association Board of Directors	36
What is Your Print Advertising Doing For You	36

FRONT COVER:

Winning photographs from the Canadian Blonde d'Aquitaine Assoc. photography contest -

Top right - Fall 2006 Winner -

"Mindi's Calf" Credit John & Ilse Vink -
Halcyon Farms, Wooler, Ontario

Center - Winter 2006 Winner -

"Relaxing" Credit Ilse Vink -
Halcyon Farms, Wooler, Ontario

Top left - Spring 2007 Winner -

"Cattle" Credit Bill Van Bakel -
Van Bakel Blondes, Dublin, Ontario

Bottom right - Fall 2007 Winner -

"0042" Credit Ann Musgrove -
KAM Blondes, Charlie Lake, BC

Advertising Content - "The Blonde Connection" assumes no responsibility for the accuracy and truthfulness of submitted advertising copy or electronically supplied pictures, and has the right to refuse any ad copy or photos. Advertisers shall indemnify and hold harmless "The Connection" containing pedigrees or statements regarding performance must conform to records kept by the Canadian Blonde d'Aquitaine Association. Copy deviating from official records may be changed as necessary without advertiser consent.

Editorial Policy - Opinions expressed are the writers' and not necessarily those of "The Blonde Connection" or the Canadian Blonde d'Aquitaine Association. Photographs are welcome, but no responsibility is assumed during transit or while in the office.

Publisher's Statement - All statements, including product claims, are those of the person or organization making the statement or claim. The publisher does not adopt any such statement or claim as its own, and any such statement or claim does not necessarily reflect the opinion of the publisher.



**Myrna Flesch - President
Cdn. Blonde d'Aquitaine Assn.**

The opening of the American Border on November 19, 2007 to animals over 30 months of age marked an historic event for the Canadian purebred industry. It placed the BSE situation behind us and has allowed Canadian purebred genetics to meet the demand pent up since May 2003.

The Blonde d'Aquitaine breed had a 5% decrease in registrations in 2007 over 2006 but in the same period enjoyed a 9% increase in transfers. Our membership increased 38% in 2007 over 2006 bring the membership to a total of 186.

Blondes excel in Lean Meat Yield (LMY) – approaching 70% in established herds across Canada. This has increased market share and market value through specialty programs like Laura's Lean. Today's health conscious consumer is after lean beef products to complement his/her food basket and that emphasis on health is an untapped market advantage for the Blonde breed.

The purebred industry will undergo several critical changes over the next decade. The introduction of marker panels within the industry by the various genome players – to enable the cattleman to be able to identify tenderness genes, to identify feed efficient genetics, to isolate disease susceptibility, to assist the commercial man with identification of calves in multi-sire pastures, to identify homozygous traits for polled and coat colour in addition to parentage to name but a few items, will change the traditional market place. Science with the advent of the SNPS technique of sampling animal genetics will also modernize the method for collection of DNA. Our traditional ways of identifying market place leaders will need to embrace these new technologies.

This publication highlights the actions of the Board of the Canadian Blonde Association to streamline the inner workings of the association. Your Board over the past four year period has introduced several initiatives that have reduced overhead pri-

marily through transfer of the administration functions to Canadian Livestock Records Corporation (CLRC) in Ottawa. The Board, itself, must operate at a very responsible level for this to be effective. Our day-to-day accounting is now handled through CLRC with the Annual Financial Statements being prepared by Allan Chartered Accountant Professional Corporation of Perth, Ontario. This firm has proven themselves with a number of purebred breed associations and prepares the necessary statements in a cost effective manner.

Your Board took full advantage of the Sustaining the Genetic Quality of Ruminants (SGQR) program offered by Agriculture Canada as a way to breathe life into the purebred sector in Fiscal years 2005-06 and 2006-07. Under this program each purebred cattle association received \$30 for each animal registered in the preceding three year period. These funds were to be used to encourage purebred sector awareness and maintain vitality of the sector of the industry that suffered during the BSE crisis. Your Board utilized this funding initiative to encourage increased registrations, advertise and collect additional performance data – particularly ultrasound data in the various Bull Tests and Heifer Evaluations held across Canada in those years. As your President, I have represented the breed on the Purebred Risk Assessment Project through Canadian Beef Breeds Council (CBBC), attended regular CBBC Meetings, attended Saskatchewan Research Council Meetings (Bova-Can Labs), and attended other industry presentations on genomics. Several of the new and upcoming changes to the beef industry make these exciting times.

The Blonde d'Aquitaine breed has an important place in the commercial cattle industry particularly as a terminal sire breed. This has made sire selection within the breed a very pertinent factor. It also accentuates the fact that it takes a good momma cow to produce the bulls required by the commercial cattleman.

I would like to take this opportunity to thank those who have advertised in the Blonde Connection and for making it possible to bring the Blonde voice to the purebred and commercial industry after a four-year hiatus. The editorial we trust will provide you with information to better assist your operation which in turn ensures the growth of the breed in Canada.

M. Flesch
Myrna Flesch

L'ouverture de la Frontière américaine le 19 novembre, 2007 aux animaux qui ont moins de 30 mois a marqué un événement historique pour l'industrie de purebred canadienne. Cela a placé la situation de BSE derrière nous et nous a permis la génétique de purebred canadienne pour répondre à la demande renfermé depuis mai 2000.

L'espèce Blonde a eu une 5% diminution dans les enregistrements en 2007 mais dans la même période a apprécié une augmentation de 9% dans les transferts. Nos membres qui se sont inscrits a augmenté 38% en 2007 amenant à un total de 186 membres.

Blondes excelle dans le Lean Meat Yield (LMY) – approchant 70% dans les troupeaux établis à travers Canada. Ceci a augmenté la part du marché et la valeur en marché par les programmes de spécialité comme Laura's Lean. Les consommateurs d'aujourd'hui sont conscient à la santé. Cela est un avantage du marché que nous pouvons exploité avec l'espèce blonde.

L'industrie de purebred subira plusieurs changements critiques dans la décennie prochaine. L'introduction de panneaux de borne dans l'industrie par les divers joueurs de génome – rendre capable l'éleveur de bétail pour pouvoir identifier les gènes de sensibilité, identifier nourrir la génétique efficace, isoler la susceptibilité de maladie, aider l'homme commercial avec l'identification de mollets dans les pâtures de multi-seigneur, identifier les traits de homozygous pour a interrogé et revêt la couleur en plus de la naissance pour nommer mais quelques articles, changera l'endroit du marché traditionnel. La science avec la venue de la technique de SNPS d'essais la génétique animale modernisera aussi la méthode pour la collection d'ADN. Nos façons traditionnelles de dirigeants d'endroit de marché distinctifs auront besoin d'embrasser ces nouvelles technologies.

Cette publication souligne les actions du Conseil de l'Association Blonde Canadienne pour caréner les fonctionnements intérieurs de l'association. Depuis ces derniers quatre ans votre Conseil a introduit plusieurs initiatives qui ont réduit principalement par le transfert des fonctions d'administration au Canadian Livestock Records Corporation (CLRC) à Ottawa. Le Conseil, lui-même, doit fonctionner à un niveau très responsable pour que cela reste efficace. Notre comptabilité de tous les jours est maintenant contrôlée par CLRC avec les états financiers annuels qui sont préparés

par l'expert-comptable d'Allan la Société Professionnelle de Perth, Ontario. Cette entreprise a prouvé avec un nombre d'associations et a prépare les déclarations nécessaires dans une manière du rapport efficace.

Votre Conseil a pris l'avantage plein du Soutenir la Qualité Génétique de Ruminants (SGQR) le programme offert par L'Agriculture du Canada comme une façon pour respirer la vie dans le secteur de purebred dans les années Fiscales 2005-06 et 2006-07. Sous ce programme chaque association de bétail de purebred a reçu 30\$ pour chaque animal inscrit dans la période de trois ans précédant. Ces fonds étaient utilisés pour encourager la conscience de secteur de purebred et maintientait la vitalité du secteur de l'industrie qui a souffert pendant la crise de BSE. Votre Conseil a utilisé cette initiative de subvention pour encourager des enregistrements augmentés, faire de la publicité pour recueillir les données d'exécution supplémentaires – particulièrement les données d'ultrasons dans les divers tests et les évaluations de génisse à l'hausse tenues à travers Canada dans ces années. Comme votre Président, j'ai représenté l'espèce sur le Projet d'Evaluation de Risque de Conseil d'Especies de Boeuf Canadien (CBBC), a assisté les Réunions de CBBC régulières, la Recherche de Saskatchewan assistée les Réunions Municipales (les Laboratoires de Bova-Boîte), et les autres présentations d'industrie assistées sur genomics. Beaucoup des nouvelles et suivant changements à l'industrie de boeuf font ces temps passionnants.

L'espèce Blonde a un endroit important dans l'industrie de bétail commerciale particulièrement comme une espèce de. Ceci a fait la sélection des taureaux dans l'espèce un facteur très pertinent. Il accentue aussi le fait qu'il prend une bonne vache pour produire les taureaux exigés par l'éleveur des bétails commerciaux.

J'aimerais saisir cette occasion pour remercier ceux qui ont fait de la publicité dans la Blonde Connection cette année. Cela nous permis d'avoir une voix Blonde au purebred et l'industrie commerciale depuis quelques années. Nous espérons que l'éditorial vous offerrez l'information pour améliorer vos opérations et que cela nous assure la croissance de notre race au Canada.

M. Flesch
Myrna Flesch



Hello to all readers of the 2008 Blonde Connection from Canadian Livestock Records Corporation (CLRC).

Since the Canadian Blonde d'Aquitaine Association (CBDA) closed the office in Calgary, CLRC has been the office for all aspects of the operation of the Association, in addition to maintaining the CBDA registry, which CLRC has done since 2000. In particular, CLRC's address, phone, fax and e-mail are now the contact points for the CBDA. All correspondence for the CBDA that is received by CLRC is then directed to the respective members of the CBDA Board of Directors who are responsible for the matter concerned.

As of January 2008, CLRC is also responsible for maintaining the financial records of the CBDA. This is a responsibility that we currently carry out for five other member associations as well.

As General Manager of CLRC, a position I have held since April 1999, I also have the overall responsibility for overseeing the day-to-day affairs of the CBDA. I will be working in close cooperation with designated members of the Board of Directors, particularly the President and Treasurer, and am also assisted by various other members of the CLRC staff.

We at CLRC look forward to playing an increased role in the affairs of the CBDA and to serving its members.

Ron Black - General Manager - CLRC

CATTLE NUMBERS DWINDLE, EXPORTS UP

Canada's cattle herd declined in 2007 as exports to the U.S. increased and higher feed costs forced some producers to send animals to slaughterhouses sooner than normal.

About 13.9 million head of cattle were on Canadian ranches as of January 1, down 1.5 percent from a year earlier, according to Statistics Canada. Feedlot herds declined 8.6 percent to 1.435 million head, and exports jumped 35 percent to 1.4 million head for the year.

A record-high rally in the price of corn has increased the cost of feeding livestock, and Canadian producers are holding fewer cattle since BSE hit in 2003.



Arsha Blondes

"We May Doze, But We Never Close!"

**POLLED & DOUBLE POLLED
FULLBLOOD BULLS
FOR SALE**

Visitors Always Welcome!



Art & Sharon Breitzkreuz

Box 11, Carnwood, Alberta T0C 0W0

Phone: 780.542.2378

Cell: 780.514.6651



Reed Rigney - President
Alberta & BC Blonde
Association



- The Association represents breeders from Alberta and B.C.
- Our annual meeting is held every fall in late November or early December.
- We hold a summer tour in June or July, which allows our breeders (and other interested parties) to see Blonde cattle and meet fellow breeders.
- Our members receive regular updates of breed and board activities (quarterly or as information becomes available).
- The Alberta Blonde Association is planning a fall sale to provide marketing opportunities for our members and purchasing opportunities for new breeders.

“Blonde d’Aquitaine cattle are first and foremost a terminal sire breed. We are a beef breed that excels in the feedlot and on the rail, and we can’t lose sight of that. If we try to be everything to everybody we’ll end up being nothing to anybody!”

We have to be careful not to breed our cattle towards the fads of the day. We are in a fad right now and few people realize it; you never do when you’re in the middle of it. I’m sure the cattleman in the 50’s and 60’s thought that their belt buckle high cattle were the right type, just as we thought the Skyscraper cattle of the 80’s were the right direction for the industry. Today we hear the buzzwords; marbling, deep-ribbed and moderate framed. Most breeds are moving in a similar direction, and in fact it is getting harder to tell some of them apart. We see the British cattle breeding for more growth and muscle, and the French breeds being bred for more moderate size, marbling and lower birth weights. However the British cattle will never equal the French cattle in lean meat yield and efficiency of gain, and the French cattle will never equal the British cattle in the maternal traits such as mothering ability, calf vigour and the ability to lay down back fat. In the end they will end up being average for the new traits they are seeking, most likely at the expense of the traits that defined their breed.

Cross breeding has a purpose; breeding the maternal breeds to the terminal breeds gives you the best of both worlds. You have a cow herd that functions with low inputs of resources and labour, and their offspring will gain and yield in the feedlot.

Many of our producers seem to have forgotten about this system, and the proven advantages of hybrid vigour. Hybrid vigour is one of the few things in life that is free.

So what does this have to do with us as Blonde breeders? I still hear too many purebred and commercial breeders talking about, and promoting Blondes in terms of maternal traits. I will say it again; we are a terminal sire breed. It is up to us as breeders to educate our bull buyers and the industry on the merits of Blondes as a terminal sire. Few breeds can combine lean meat yield, feed conversions and calving ease as well as our breed can. We should not be promoting the milking ability and mothering qualities of Blonde cows; the crossbred heifers belong in the feedlot not the cowherd.

The Blonde breed is one of the best-kept secrets in the beef industry. We as breeders just need to focus on marketing the strengths of the breed, not diluting our strengths to improve our perceived weaknesses”.

Reed Rigney
 President
 Alberta and British Columbia Blonde Association

American BLONDE Association
 d'Aquitaine

7407 VZ COUNTY ROAD 1507
GRAND SALINE, TX 75140
903/570-0568 info@blondcattle.org
www.blondcattle.org



“Udderly Delicious!!”

The Chino, Calif., packing facility responsible for the largest meat recall in U.S. history will likely shut down permanently, according to Reuters.

Westland/Hallmark Meat Co. general manager Anthony Magidow told The Wall Street Journal, “I don’t see any way we could reopen.” Especially if the U.S. Department of Agriculture (USDA) seeks payment for losses, Magidow added.

Smart Agriculture Solutions



For over 20 years the Saskatchewan Research Council's (SRC) various laboratories have been providing services to the livestock and crop industries. From parentage verification to animal and crop traits to water and soil testing, our various labs provide quality, independent analysis.

Today our labs continue to be on the leading edge through our applied research capabilities and implementation of state-of-the art equipment. We specialize in:

- Applied Genomics - animal and crop traits
- Bioprocessing - value-added products and fuels from bioresources
- Health and Food - crop inoculants, vaccines, and nutraceuticals

Contact us to learn how we can help the sustainability of your business.



Saskatchewan Research Council

125 - 15 Innovation Blvd., Saskatoon, SK S7N 2X8 • Ph: 306-933-5400 • www.src.sk.ca



OLD GENETICS ON NEW

what a combination!

We're offering top of the line heifers and bulls sired by the oldies **POP, CORBY, BLUE JAY, WILLIAM & REX**

DENNIS, DEBBIE, DEE-ANNA & BRANDEN ELLIOTT

RR2 Staffa, Ontario NOK 1Y0 • www.djfarmscattle.com • EMAIL dje@djfarmscattle.com

PH 519.345.2785 • FAX 519.345.2799

Check out our website for future embryos from our best cow lines: **TRIPLE C SERENADE, HEARTWOOD'S LORELEI**

THE KNOX FAMILY FARM

FULLBLOOD • HORNED • POLLED • BLONDE D'AQUITAINE

*Superb Quality ET Bloodlines
successfully imported
from France.*

KNOX Scarlett 25S - Heifer 2006

KNOX Tarn 9T - Bull 2007

Dam - Fanchette

Sire - Orion



Embryos Transplanted KNOX SCARLETT 25S Born April 4, 2006

*Thank you to Brian Down, Harry
Bouwmeester and Nyles Watson for
purchasing Bred Females at the
August 2007 CSM Blonde Sale*

Our 4 bred cows averaged \$2,000.00

- National Premier Breeder 2006
- Premier Exhibitor Blonde Show Circuit 2006
- Ontario Show Bull of the Year 2006
- Grand and Reserve Champion Bulls 2007
- Grand and Reserve Champion Female 2007

Ian Kruis, Manager
www.theknoxfarm.com

KNOX INNOVATIONS INC.

Telephone 905-263-2930

Ken Knox, Owner
Enfield Rd., Hamton, ON

WESTLANE FARMS

Yearling & 2 year old Bulls
for Sale on the farm!



Stan & Sarah Konschuh
Didsbury, Alberta • 403.335.4368

- POLLED & HORNED
- SEMEN TESTED
- PUREBRED BLONDE CATTLE

Full information on sale animals at:

www.westlanefarms.com

Email: konschuh@westlanefarms.com

"YOUR COWS DESERVE OUR BULLS"



Canadian
londe d'Aquitaine
Association

- ✦ Memberships are due on or before January 1st each year.
- ✦ The Canadian Blonde d'Aquitaine Association invites you to be a part of the Association, please contact us for information.

2008
MEMBERSHIP DIRECTORY

Compiled by Canadian Livestock Records
Corporation (CLRC) as at 01/15/08

– ALBERTA –

Arsha Blondes
Art Breitreuz
 Box 11
 Carnwood, AB T0C 0W0
 Ph: 780-542-2378
 Fax: 780-514-5023

Dennis L & Danita M L Axenchuk
Diamond Willow Blondes
 Box 1781
 Lac La Biche, AB T0A 2C0
 Ph: 780-623-2618
 Fax: 780-623-9555
 jomedade@yahoo.ca

Cliff & Marie Balan
 RR 1
 Bluffton, AB T0C 0M0

Thomas & Doris Banziger
 Box 2104
 Stettler, AB T0C 2L0

Robert & Johanna Breitreuz
 RR 1
 Falun, AB T0C 1H0

Sharon Breitreuz
 Box 11
 Carnwood, AB T0C 0W0
 Ph: 780-542-2378
 Fax: 780-514-5023

Gordon Carlson
 PO Box 124
 Stavely, AB T0L 1Z0

Chevlard Farm
Merv & Donna Skjaveland
 RR 1
 Ferintosh, AB T0B 1M0
 Ph: 780-877-3750
 Fax: 780-877-3750
 2chevs@telus.net

Elisabeth Crabbe
Pine Coulee Blondes
 PO Box 406
 Stavely, AB T0L 1Z0
 Ph: 403-549-2018
 mjandec@telus.net

Michael & Elisabeth Crabbe
 Box 406
 Stavely, AB T0L 1Z0
 Ph: 403-549-2018
 Fax: 403-549-2018
 mjandec@telus

Denlyn Farms
Dennis & Lyndon Szott
 Box 567
 Daysland, AB T0B 1A0
 Ph: 780-373-2164
 lyndon@telusplanet.net

Dwight Dufva
 RR 1
 Bashaw, AB T0B 0H0

Harcon Stock Farm
H & C Nauenburg
 RR 2
 Strome, AB T0B 4H0
 Ph: 780-376-2184
 Fax: 780-376-2184
 harcon@telusplanet.net

Boyd Heyland
 Box 1436
 Claresholm, AB T0L 0T0

Rick Jackson
Jackson Blondes
 PO Box 578
 High Prairie, AB T0G 1E0
 Ph: 780-523-2681
 Fax: 780-523-2693
 jrckj@telus.net
 www.telusplanet.net/public/jacksons

J"N"L Ranches Ltd
 Box 968
 Chinook, AB T0J 0R0

David & Janet Kamelchuk
 Box 32
 Ellscoot, AB T0A 1B0
 Ph: 780-675-1227
 Fax: 780-675-1227
 jkarland@telusplanet.net

George Kocyba
 RR 2, Station Main
 Ponoka, AB T4J 1R2

Lawrence Koper
LMR Ranch
 Site 19, Box 1, RR 2
 Cochrane, AB T4C 1A2
 Ph: 403-932-4732
 Fax: 403-932-4732
 koper@wildroseinternet.com

Allan Langhofer
 Box 95
 Bonanza, AB T0H 0K0
 Ph: 780-353-3784
 Fax: 250-782-1077

Lisa Lepensee
 Box 359
 High Level, AB T0H 1Z0

Mackenzie's Agricultural Enterprizes
 401 4900-54th Ave
 Drayton Valley, AB T7A 1V8
 Ph: 780-542-2268
 Fax: 780-542-7388
 kenkb@telus.net

Colin & Felicity Manuel
Shambani Farms
 Box 882
 Rocky Mountain House, AB T4T 1A6
 Ph: 403-845-4914
 Fax: 403-844-8482
 colinmanuel@hotmail.com

Mar-Cam Farms Ltd
 Box 220
 Carstairs, AB
 T0M 0N0

Markwood Farm
c/o Dorothy Young
 Box 416
 Cochrane, AB T4C 1A6
 Ph: 403-932-2419
 Fax: 403-932-2419

Ryan Nauenburg
 RR 2
 Strome, AB T0B 4H0
 Ph: 780-376-2184
 Fax: 780-376-2184
 harcon@telusplanet.net

Lee Nelson
 Stavely, AB T0L 1Z0

Steve Patko
 RR 4
 Innisfail, AB T4G 1T8

D & D Patterson
 Box 873
 Nanton, AB T0L 1R0

Rosetrail Blonde d'Aquitaine Ltd
 PO Box 5863
 High River, AB T1V 1P6
 Ph: 403-601-2526
 deswart@netscape.ca

Len Scarrow
 Box 1024,
 Fairview, AB T0H 110

Lloyd Schnick
 RR 3, Stn Main
 Wetaskiwin, AB T9A 1X1

Otis & Sharon Schoolcraft

RR 2
Gwynne, AB T0C 1L0
Ph: 780-361-2006

Spruce Vale Blondes

RR 1
Westerose, AB T0C 2V0
Ph: 780-586-2800 / Fax: 780-586-0723

True North Ranch

Box 1293
Fairview, AB T0H 1L0
Ph: 780-835-4964
Cell: 780-835-6763
Fax: 780-835-6648
csrayko@nait.ca

Westlane Farms**Konschuh**

RR 1, Site 9, Box 12
Didsbury, AB T0M 0W0
Ph: 403-335-4368
Fax: 403-335-4368
konschuh@westlanefarms.com
www.westlanefarms.com

West Wind Blondes**Shirley Bilton**

Box 334
Stavely, AB T0L 1Z0
Ph: 403-549-2371
Fax: 403-549-2374
westwind@telusplanet.net
www.telusplanet.net/public/westwind

West Wind Blondes**Myrna Flesch**

Box 334
Stavely, AB T0L 1Z0
Ph: 403-549-2371
Fax: 403-549-2374
westwind@telusplanet.net
www.telusplanet.net/public/westwind

West Wind Blondes**S. Bilton & M. Flesch**

Box 334
Stavely, AB T0L 1Z0
Ph: 403-549-2371
Fax: 403-549-2374
westwind@telusplanet.net
www.telusplanet.net/public/westwind

Willow Springs Stock Farm

Reed W Rigney
Box 5959
Westlock, AB T7P 2P7
Ph: 780-348-5308
rigney@clearwave.ca

Wayne Worthington

Box 65
Bowden, AB T0M 0K0
Ph: 403-224-5482
Fax: 403-224-5483
wdw1965@msn.com

- BRITISH COLUMBIA -**Jo-Lyn Ranch**

Box 496, Boundary Cr. Rd.
Greenwood, BC V0H 1J0
Ph: 250-445-6401

Karl & Ann Musgrove

Kam Blondes
Box 106
Charlie Lake, BC V0C 1H0
Ph: 250-262-3278
Fax: 250-262-3278

Anita & Jim Soroka

RR 1
Edgewood, BC V0G 1J0

Louise Wolfe

Box 152
Groundbirch, BC V0C 1T0

- MANITOBA -**Assiniboine Resources Inc**

c/o Garland Laliberte
89 Shorecrest Dr.
Winnipeg, MB R3P 1P4
Ph: 204-489-7772
Fax: 204-488-3829
glalib@shaw.ca

Vernon & Katalin Baker

Box 249
Newdale, MB R0J 1J0
Ph: 204-849-2231

Harry Banman

Box 6
New Bothwell, MB R0A 1C0

Chevalier Grain & Livestock Farms

Box 339
Swan Lake, MB R0L 1Z0
Ph: 204-836-2643
chevy11@mts.net

Marcel J Dufault

Bellevue Blondes
Box 67
Haywood, MB R0G 0W0
Ph: 204-379-2426
Cell: 204-745-7412
Fax: 204-379-2426
mdufault@cici.mb.ca

Dave Gerega

Blue Diamond Agra
Box 1379,
Roblin, MB R0L 1P0
Ph: 204-937-3426
Fax: 204-937-2187
dger@mts.net

Hazel Grove Blondes

Bill & Brian Wood
Box 970
Carberry, MB R0K 0H0
Ph: 204-834-2967
Fax: 204-834-2967
wkwood@xplornet.com

Russel Hooley

Box 142 252 Kelly
Treherne, MB R0G 2V0
Ph: 204-723-2140

Hungry Hills Blondes

Helen & Eayrton Hall
PO Box 519
Killarney, MB R0K 1G0
Ph: 204-523-4359

Kay Lee Farms

Terry & Doug Baker
Box 116
Newdale, MB R0J 1J0
Ph: 204-849-2164
Fax: 204-849-2164
dlbaker@inethome.ca
http://mts.net/~dlbaker/home.htm

Philip Kelemen

Box 196
Langruth, MB R0H 0N0

Ben Kinkead

Eriksdale, MB R0C 0W0

Knobby Oak Farms

Stephen & Bernice Dmytriw
Box 64
Rapid City, MB R0K 1W0
Ph: 204-826-2661
Fax: 204-826-2798

McIntyre Blondes

RR 3, Box 25
Carman, MB R0G 0J0
Ph: 204-745-3404
rmcintyre@pmcnet.ca

Anders Pedersen

Box 311
Neepawa, MB R0J 1H0

Kelly Schmidt

Box 86
Pine River, MB R0L 1M0

**Sundance Valley Ranch
Marcel & Jean Fouillard**

Box 53
St. Lazare, MB R0M 1Y0
Ph: 204-683-2208
zi23@mts.net

Triple C Blondes

John Carlisle
Box 54
Carroll, MB R0K 0K0
Ph: 204-483-2024
Fax: 204-483-3724

Triple K Blondes

Art Kroeker
Box 2316, W-30-2-5 NE
Morden, MB R6M 1B9
Ph: 204-822-3174
Cell: 204-822-3165
Fax: 204-822-3174

**Mark & Monique Van de Spiegle
New Horizon Stock Farm**

Box 250
Treherne, MB R0G 2V0
Ph: 204-723-2041
Fax: 204-723-2041
newhorizon@inetbiz.ca

Douglas Wetherill

Box 3
Kelwood, MB R0J 0Y0

– NEW BRUNSWICK –
James Graham

Bull Moose Hill Farms
79 Graham Rd.
Belleisle Creek, NB E5P 1K7
Ph: 506-485-2247

Ron MacArthur

735 Salisbury Rd
Moncton, NB E1E 1C4
Ph: 506-382-6630
Fax: 506-382-6630
rmacarthur@rogers.com

– NOVA SCOTIA –
Richard Hines

T Rickmir Farms
PO Box 15
River John, NS B0K 1N0
Ph: 902-351-2027

– ONTARIO –
Steven J. Acres

RR 2
Carp, ON K0A 1L0
Ph: 613-836-4190
Fax: 613-838-3133
stevenjacres@sympatico.ca

Alla-Ru Blondes

Allan Smith
RR 3
Zurich, ON N0M 2T0
Ph: 519-236-4786

Gary Armstrong

474 County Rd 40, RR 1
Norwood, ON K0L 2V0

Linda Armstrong

Whip Poor Will Ridge
214 N Lancelot Rd, RR 3
Utterson, ON P0B 1M0
Ph: 705-789-1921

Chris Asselstine

RR 1, Box 23
Harrowsmith, ON K0H 1V0
Ph: 613-372-1200
casselstine@sympatico.ca

Sheldon Asselstine

RR 1, 4655 Watson Rd
Harrowsmith, ON K0H 1V0
Ph: 613-372-2608

Murphy Baker

Butternut Blondes
1050 14th Line, RR 5
Sunderland, ON L0C 1H0
Ph: 905-985-0563
Fax: 905-985-0563
bakerblondes@sympatico.ca

Black Marble Blondes

c/o Floyd & Bill Blackburn
16354 Hwy 62, R.R. 1
Eldorado, ON K0K 1Y0

Bouwmeester Farms

John Bouwmeester
2458 Patrick Rd, RR 2
Branchton, ON N0B 1L0
Ph: 519-621-0689
Fax: 519-621-3435

Elizabeth & Harry Bouwmeester

Jae Acres
PO Box 71
Rockton, ON L0R 1X0
Ph: 519-647-2354
Fax: 519-647-2248

Brule Blondes

Nyles Watson
RR 3
Powassan, ON P0H 1Z0
Ph: 705-724-3197

Andrew Bunda

8310 Mitch Owens Rd, RR 1
Edwards, ON K0A 1V0
Ph: 613-822-0574
Fax: 613-822-6894

Walter Bunda

8310 Mitch Owens Rd
Edwards, ON K0A 1V0
Ph: 613-822-0574
Fax: 613-822-6894

**Kevin & Diane Conroy
Dixon Valleyview Farms**

RR 2
Lunenburg, ON K0C 1R0

Jeff Couch

1770 Durham Rd 6, RR 5
Sunderland, ON L0C 1H0
Ph: 905-431-0212
jeff_couch_@hotmail.com

Pat & Gail Coughlan

11699 Conc 6, RR 2
Uxbridge, ON L9P 1R2
Ph: 905-852-0180

John Dix

Ceader Valley Farms
RR 7
Markdale, ON N0C 1H0
Ph: 519-986-2178
johndix@bmts.com

DJ Farms

c/o Dennis & Debbie Elliott
RR 2
Staffa, ON N0K 1Y0
Ph: 519-345-2785
Fax: 519-345-2799
dje@djfarmscattle.com
djfarmscattle.com

Chris Doran

RR 3
Tweed, ON K0K 3J0

Eric Doran

RR 3
Tweed, ON K0K 3J0
Ph: 613-478-5414

Dovecote Blondes**John & Debbie Plas**

2254 Jerseyville Rd W, RR 1
 Jerseyville, ON L0R 1R0
 Ph: 905-648-5437
 Fax: 905-648-5437
 dplas@sympatico.ca

Brian Down**Brileen Hill Farms**

460 Down Rd, RR 3
 Trenton, ON K8V 5P6
 Ph: 613-392-7052

Rick Drinkill**Forest View Farms**

RR 3
 Elmvale, ON L0L 1P0

Darren F Dunham**Franmar Blonde Farm**

RR 4
 Campbellford, ON K0L 1L0
 Ph: 705-653-2428

Donald Dunham**Donaleen Blondes**

RR 4
 Campbellford, ON K0L 1L0
 Ph: 705-653-4293
 Fax: 705-653-3608

Bryan Durst**Brydown Farms Inc**

RR 2
 Clinton, ON N0M 1L0
 Ph: 519-524-9158
 Fax: 519-524-8750
 brydown@hurontel.on.ca

Farmin' EH Farm**c/o Eric Versteeg**

RR 2
 Clifford, ON N0G 1M0
 Ph: 519-335-3740
 Fax: 519-335-6769
 ehversteeg@xplornet.com

Paul Ferguson**Crystal Farms**

21 Crystal Rd, RR 3
 Jasper, ON K0G 1G0
 Ph: 613-275-2422
 Fax: 613-275-1713

Golden Mile Blondes**T M & M Mc Vety**

4060 Malcolm Rd
 Nestleton Station , ON L0B 1L0
 Ph: 905-986-5136

Ray Gutz

GD
 Palmer Rapids, ON K0J 2E0

Timothy & Marilyn Hill

801 Damien Way
 Mississauga, ON L5C 3C3

Holburn Farms**Floyd & Sheryl Blackburn**

RR 1
 Eldorado, ON K0K 1Y0
 Ph: 613-473-4914
 sblackburn.welch@bellnet.ca

Brent & Pauline Hughes**Paradise Farms**

RR 4
 Smiths Falls, ON K7A 4S5

Laura Hughes

730 Hazel Glen Rd, RR 3
 Powassan, ON P0H 1Z0
 Ph: 705-724-5720

Indian River Blondes**Tony & Bev Lee**

1446 County Rd 2, RR 1
 Bailieboro, ON K0L 1B0
 Ph: 705-939-8835
 blee@nexicom.net

Jean Ingleton

2275 County Rd 2, RR 8
 Peterborough, ON K9J 6X9
 Ph: 705-745-6036

Wim & Woutina Jansen

1573 Burman Line
 Wilkesport, ON N0P 2R0
 Ph: 519-864-4709

**Cleve & Kathryn Jessup
Jessup Farms**

RR 1
 Palmer Rapids, ON K0J 2E0
 Ph: 613-758-2067
 Fax: 613-758-2067
 ckjessup@northcom.net

John Jessup

591 River Bend Dr, RR 1
 Palmer Rapids, ON K0J 2E0
 Ph: 613-758-2067

Nicholas Jessup

544 River Bend Dr
 Palmer Rapids, ON K0J 2E0

Paul Kauffeldt

796 Wicklow Dr
 Oshawa, ON L1H 2X4

James G Kay

RR 1, Dearlake Rd 225
 Norland, ON K0M 2L0

Gary Keown

RR 1
 Powassan, ON P0H 1Z0
 Ph: 705-724-5812

Eldred King

15 Bayberry St
 Stouffville, ON L4A 7Z1
 Ph: 905-640-2876

Knox Innovations Inc

6325 Enfield Rd
 Hampton, ON L0B 1J0
 Ph: 905-263-2930
 Fax: 905-263-2934
 farmerkruis@knoxpumpkinfarm.com
 www.theknoxfarm.com

Marcel & Laurel Lachance**Mal-Lar Acres**

3558 Highway 7, RR 3
 Norwood, ON K0L 2V0
 Ph: 705-639-2183
 marcel_lachance@sympatico.ca

John Langstaff

2218 Bentpath Line, RR 3
 Sombra, ON N0P 2H0
 Ph: 519-864-1970

Bruce & Catherine Langstaff**Beavermeadow Blondes**

RR 2, 1542 Mandaumin Rd
 Tupperville, ON N0P 2M0
 Ph: 519-864-1333

Dan Langstaff**Beavermeadow Blondes**

RR 2, 1542 Mandaumin Rd
 Tupperville, ON N0P 2M0
 Ph: 519-864-1333

Phillip Langstaff

RR 3
 Sombra, ON N0P 2H0

Malram Farms**Fred Ingram & Dave Mallory**

RR 2
 Campbellford, ON K0L 1L0
 Ph: 705-653-2577
 Fax: 705-924-3385
 ingram@trytel.net

Maple Down Farms
Mervyn & Gail Downey
 RR 2
 Pakenham, ON K0A 2X0
 Ph: 613-624-5346
 Fax: 613-624-5928
 m.downey@sympatico.ca

Maple Down Farm
Stephen Downey
 RR 2
 Pakenham, ON K0A 2X0
 Ph: 613-624-5030
 Fax: 613-624-5030

Maple Heights Blondes
c/o Clare & Cathy Kuepfer
 632 Concession 2, RR 1
 Dobbinton, ON N0H 1L0
 Ph: 519-934-1351
 clarekuepfer@hotmail.com

Maple Meadow Farm
c/o C Acres & D Bazinet
 6830 Belmeade Rd, RR 4
 Osgoode, ON K0A 2W0
 Ph: 613-826-2330
 Fax: 613-826-1076
 acres@maplemeadows.ca
 www.maplemeadows.ca

Maple Valley Farms
William Stocks
 PO Box 21
 Badjeros, ON N0C 1A0
 Ph: 519-923-2048
 Fax: 519-923-9186

Scottie Martin
 2986 John Martin Rd
 Hartington, ON K0H 1W0

MBRHEO Blondes
Rheo & Sharon Machina
 RR 1
 Clifford, ON N0G 1M0
 Ph: 519-327-8646
 Fax: 519-327-8772
 rheo@mbrheocattle.com
 www.mbrheocattle.com

Laverne McGee
Lavelaine Farms
 702 Cty Rd 35, RR 1
 Campbellford, ON K0L 1L0
 Ph: 705-653-3160
 Cell: 705-653-6308
 Fax: 705-653-5927
 lavelainefarms@sympatico.ca

Paul E McInroy
 RR 4
 Marmora, ON K0K 2M0

Robert D. McKirdy
Galbraith Blonde Farm
 RR 2, 1293 Galbraith Rd
 Clayton, ON K0A 1P0
 Ph: 613-256-0107

Ashley McNeven
Hilltop Orchard Farm
 RR 3
 Hastings, ON K0L 1Y0
 Ph: 705-295-6208
 Fax: 705-295-6208

Dave & Sheila McNeven
Hilltop Orchard Farm
 4426 County Rd 2, RR 3
 Hastings, ON K0L 1Y0
 Ph: 705-295-6208
 Fax: 705-295-6208
 mcnevan@nexicom.net

Darrel Meek
D R M Blondes
 34 Francis St E
 Creemore, ON L0M 1G0
 Ph: 705-466-3181
 drdblondes@gmail.com
 www.drdblondes.com

Carmen Morris
 254 Brackenridge Dr
 Millbrook, ON L0A 1G0

Doug Musclow
 RR1
 Palmer Rapids, ON K0J 2E0

National Museum of Science & Technology Corp
 PO Box 9724, Station T
 Ottawa, ON K1G 5A3
 Ph: 613-996-7812
 Fax: 613-947-2374
 dsutin@technomuses.ca
 agriculture.technomuses.ca

Brian Peters
 1400 Rickards Rd, RR 2
 Perth, ON K0H 2L0

Gunnar Petersen
 1196 Roselawn Place, Box 71
 Westbrook, ON K7P 2V2

Dennis Pettybone & Sherry Morby
 Concession 7, RR 4
 Dundalk, ON NOC 1B0

Carl Pixley
 4482 Yarker Rd
 Harrowsmith, ON K0H 1V0

Kristofer Plas
Dovecote Blondes
 2254 Jerseyville Rd West
 Jerseyville, ON L0R 1R0

Allan & Teeny Plumton
Echo Pond Farm
 RR 7
 Brighton ON K0K 1H0
 Ph: 613-475-1606

Bruce Robillard
 Box 433
 Arnprior, ON K7S 3L9
 Ph: 613-623-9291
 Fax: 613-623-5972
 cvr@istar.ca

William E. Robinson
 RR 1
 Campbellford, ON K0L 1L0
 Ph: 705-653-2566

Rondakk Acres
Ron & Donna McGee
 RR 2
 Codrington, ON K0K 1R0

Rosepark Blondes
Rudy Fintelman
 RR 2
 Cameron, ON K0M 1G0
 Ph: 705-359-1112
 Fax: 705-359-1112

Larry H. Schneider
 RR 1
 Gads Hill Station, ON N0K 1J0
 Ph: 519-656-2697

Sears Family Farm
c/o Dwayne & Rebecca Sears
 120 Sears Rd, RR 5
 Bancroft, ON K0L 1C0
 Ph: 613-332-0945
 r.sears@sympatico.ca

Sparling Farms
c/o Ed Sparling
 59 Pinewoods Rd
 Haley Station, ON K0J 1Y0

David Spence
Leonard Limestone Blondes
 2703 Watson Rd
 Navan, ON K4B 1J1
 Ph: 613-835-2248

Martin & June Stubbs
12151 Cartwright West 1/4 Line
Blackstock, ON L0B 1B0
Ph: 905-986-5507
greenark@sympatico.ca

Byron Thompson
RR 1
Corbyville, ON K0K 1V0

Dylan Thompson
RR 1
Chatsworth, ON N0H 1G0

Matthew Unger
Heartwood Farms
RR 2
Lakefield, ON K0L 2H0
Ph: 705-652-1201
Fax: 705-652-1776
heartwood@accel.net

Bill Van Bakel
RR 2
Dublin, ON N0K 1E0
Ph: 519-345-2518
vbb@ezlink.on.ca
www.vanbakelblondes.ca

John & Anne Vandergeest
376 B Line Rd, RR 4
Pembroke, ON K8A 6W5
Ph: 613-732-4481
Fax: 613-732-4481
vandergt@nrtc.co

Case Vanderham Farms
RR 1
Holland Centre, ON N0H 1R0
Ph: 519-794-3561
Fax: 519-794-3561

Jason Van Tol
1296 Cartier Blvd
Peterborough, ON K9H 6S1
705-743-3912

John & Ilse Vink
Halcyon Farms
40 Gazley Rd, RR 1
Wooler, ON K0K 3M0
Ph: 613-397-1890
Fax: 613-397-1890
jiv@reach.net

Rachel Vink
Halcyon Farms
RR 1
Wooler, ON K0K 3M0

Daniel Webster
455 Sanderingham Rd, RR 5
Woodville, ON K0M 2T0
Ph: 705-439-3435

James & Veronica Williams
Aurora Green Farms
7162 Ravenshoe Rd
Pefferlaw, ON L0E 1N0
Ph: 905-473-6669
Fax: 905-473-6669
jwilliams@zing-net.ca

Gordon T. Wilson
7800 Wilson Lane
Campbellcroft, ON L0A 1B0

Joe Yoder
RR 8
Owen Sound, ON N4K 5W4

Gary Young
Elmbend Farms
1844 Browns Line
Peterborough, ON K9J 6X6
Ph: 705-768-9702
Cell: 705-876-0009

– QUEBEC –

Ferme Beaudoin & Fils senc
a/s Israël Beaudoin
200 Rang St-Léon
St-Théophile de Beauce, QC G0M 2A0

Gaetan Bougie
354 Rang 3
Kingsey Falls, QC J0A 1B0
Ph: 819-358-5495
Fax: 819-358-5435

Michel Bougie
354 Rang 3 Ste-Elizabeth
Kingsey Falls, QC J0A 1B0
Ph: 819-358-5495
Fax: 819-358-5435
boogie@telwarwick.net
cf.geocities.com/fermeboogiefarm

Ferme Daniel Breton
950 Chemin Brookbury,
Bishoppton, QC J0B 1G0
Ph: 819-884-5945
Fax: 819-884-1376
daniel_breton@sympatico.ca

Jean-Paul Cadorette
5610 Rte 112
Ascot Corner, QC J0B 1A0

Justin Cleary
310 Ch Bourassa
Ste Anne De La Rochelle, QC
J0E 2B0
Ph: 450-539-0385
clearyr@globetrotter.net

Ferme A & L Cyr
4677 Ch Lac des Loups
Quyon, QC J0X 2V0
Ph: 819-458-2971
Fax: 819-458-2971

Bernard Dallaire
131 Rang 9
Wickham, QC J0C 1S0

Francois Dandurand
337 Rang 1
Racine, QC J0E 1Y0
Ph: 450-532-2545
Bertrand Dawson
133 Chemin Ham
Dudswell, QC J0B 2L0

Laurent Desrosiers
Ferme Blondaine
265 Route De La Mer
Ste. Flavie, QC G0J 2L0
Ph: 418-775-5408
Fax: 418-775-5408

Ferme Du Cap Enr
Jacques Deslandes
1703 11e Rang
St Valerien, QC J0H 2B0
Ph: 450-549-2353
Fax: 450-549-2190
jackdeslandes@hotmail.com

Ferme Duregard
a/s Mme. Aline Beaugard
1200 Beaugard
Lawrenceville, QC J0E 1W0
Ph: 450-535-6334
Fax: 450-535-6334

Maurice O. Farrell
185 Rte St Damien
Ste-Malachie, QC G0R 3N0

Yvon Grondin
42 Route 269
St-Honoré de Shenley, QC G0M 1V0

Ferme Morrissey
c/o Shawn Long
1391 1er Rang Maricourt
Racine, QC J0E 1Y0

Gilbert Gauthier
1564 Rang 9
Ste Clothilde de Horton, QC J0A 1H0

Ferme Gravel RSJM Inc
a/s René Gravel
140 St Elisabeth Sud
St-Prosper de Champlain, QC G0X 3A0
Ph: 418-328-3640

Gilles Guérard

1070 Chemin de La Montagne
CP 524
St-Ansèlme, QC G0R 2N0
Ph: 418-885-4396 / Fax: 418-885-4716

Mélanie Guilmain

1120 5e Rang
Roxton Falls, QC J0H 1E0

Daniel Jacques

166 Rue Verreault
St. Joseph, QC G0S 2V0
Ph: 418-397-5798

Ferme Jocka Enrg
John MacFarlane

604 Rang 3 Ouest
St-Joachim de Shefford, QC J0E 2G0
Ph: 514-539-1533

Marcel Lafontaine

217 Ch Rang 3 Sud
Montcerf-Lytton, QC J0W 1N0
Ph: 819-449-1925

**Ferme Gaétan Lamoureux
et Linda Raymond**

488 1e Rang Est,
St-Joachim de Shefford, QC JOE 2G0
Ph: 450-539-2657 / Fax: 450-539-0954

Clemence Landry
Ferme Super C

2738 Rang Bord De L'eau
Ste-Clothilde de Horton, QC
J0A 1H0
Ph: 819-336-5503

Marlyne Langevin & Jocelyn Trudel

73 6e Rang Est
Ste Anne du Sault, QC G0Z 1C0

Philip Langlois

87 5e Rang Ouest
St. Francois Xavier, QC J0B 2V0
Ph: 819-845-7027 / Fax: 819-820-3348
plangloi@abacom.com

Murdock Olmsted

441 Chemin Daly
Gatineau, QC J9J 3G1

Marc-Andre Lapointe

240 6 Ave Nord.
St Georges, QC G5Y 5B7
Ph: 418-225-9679

L.B. Piémontais 2000 Senc

5124 Route 222
Valcourt, QC J0E 2L0
Ph: 450-532-3586 / Fax: 450-532-5455

L Pierre Léger
Ferme Phanica Senc

1177 - 34e Av
St-Zotique, QC J0P 1Z0
Ph: 450-267-9160 / Fax: 450-267-9166
phanica@hotmail.com

Gerald Lynott
Pine Ridge Farm

12 Pine Ridge
Cantley, QC J8V 3C8
Ph: 819-827-0527

William Moloughney

23 Mitchem Rd, RR 5
Shawville, QC J0X 2Y0
Ph: 819-647-5184 / Fax: 819-647-6471
ann.lamirande@mess.gouv.qc.ca

Réal Pellerin

383 Rang 12
Ste Sophie, QC J5J 2S6
Ph: 819-364-2378

Ferme Picolo Enr
a/s Jean-Paul Houde

305 Rue Principale
Racine, QC JOE 1Y0
Ph: 450-532-3788

Ranch Super Blonde
Edgar Ritchie

121A Robichaud
New Richmond, QC G0C 2B0
Ph: 418-392-4587 / Fax: 418-392-4537

Silver Maple Farm
Barry Horner

C 20 6 Conc Rd, RR 3
Shawville, QC J0X 2Y0
Ph: 819-647-2151 / Fax: 819-647-2151
l.horner@picnoc.net

Randy Sloan

176 Ridge Rd, RR 4
Campbells Bay, QC J0X 1K0
Ph: 819-648-2892 / Fax: 819-648-5575
sloanfarms@hotmail.com

Spruce View Farm
Gerald Dawson

1750 Chemin Vide Sac, RR 1
Lachute, QC J8H 2C5
Ph: 450-562-9166 / Fax: 450-562-0411

Fermes Triple R
Claude H Romain

280 Thomas Lefevre Rd, Box 598
Fort Coulonge, QC J0X 1V0
Ph: 819-683-3278 / Fax: 819-683-3275
clauderomain@sympatico.ca

- SASKATCHEWAN -
Stan Doering

Box 1641
Yorkton SK S3N 3C5

Forty Acre Blondes
Don Mehler & Pat Filz

PO Box 418
Lampman, SK S0C 1N0
Ph: 306-634-2174
fortyacreblondes@sasktel.net

Green Meadows Farm

Box 81
Handel, SK S0K 1Y0
Ph: 306-658-4232

Thunder Creek Blondes
Andy McKay

Box 36
Kelfield, SK S0K 2C0
Ph: 306-932-4912
ammckay@sasktel.net

- VERMONT (U.S.) -
P C Leibold
Paddock Farms Inc

7560 US Route 2
Plainfield, VT 05667
Ph: 802-426-4086
beefbypfb@yahoo.com



Canadian Blonde d'Aquitaine Association

c/o Canadian Livestock Records Corporation

2417 Holly Lane, Ottawa, ON K1V 0M7

Phone: 613-731-7110 • Fax: 613-731-0704

e-mail: cbda@clrc.ca www.canadianblondeassociation.ca

2008 Membership Directory

Membership as of January 15, 2008

Memberships are due on or before

January 1st each year.

Membership Directory compiled by
Canadian Livestock Records Corporation
(CLRC) as at 01/15/08

FULLBLOOD & PUREBRED
BLONDE d'AQUITAINE CATTLE

**KARL & ANN
MUSGROVE**

KAM BLONDES

Box 106, Charlie Lake, BC Canada V0C 1H0
(near Fort St. John)

Ph: 250-262-3278

*Keeping the
Commercial
Man in Mind!*

**B
C**

PINE COULEE BLONDES

Mike & Lisl Crabbe

Box 406 Stavelly AB T0L 1Z0
mjandec@platinum.ca

Ph: 403.549.2018
Ph: 403.668.6220

Home of
"West Winds Gerstwin 147G"

Colin & Felicity Manuel

SHAMBANI BLONDES

P.O. Box 882, Rocky Mountain House, AB T4T 1A6

Phone: 403-845-4914

E-Mail: colinmanuel@hotmail.com

BULLS & HEIFERS FOR SALE

**A
L
B
E
R
T
A**

SPRUCE VALE BLONDES

Blonde d'Aquitaine Cattle

Steve & Shirley Jackson

R.R. #1, Westerose, AB T0C 2V0

Ph: 780.586.2800
Email: hootch@telus.net

Polled & Horned

Belleuve Blondes

Full Blood, Purebred, Polled & Horned Bulls & Females For Sale.

Marcel Dufault Box 67, Haywood
204.379.2426 MB ROG 0W0

KNOBBY OAK FARMS

Purebred Bulls & Females available by Private Treaty!

Stephen & Bernice Dmytriw
204-826-2661
Box 64, Rapid City, MB ROK 1W0

FULLBLOOD & PUREBRED
BLONDE d'AQUITAINE

McINTYRE BLONDES

Bob McIntyre

Box 25, Carman, MB R0G 0J0
204.745.3404

**M
A
N
I
T
O
B
A**

Triple K Blondes

Art Kroeker

Ph: 204-822-3174
Cell: 204-325-6254

Box 2316, Morden,
Manitoba R6M 1B9
Fax: 204-822-3174

Darrel Meek
34 Francis St. E
Creemore, On L0M 1G0

D.R.M. BLONDES

Fullblood, Purebred, Commercial

Ph: 1-705-466-3181
Website: www.drmblondes.com

**O
N
T
A
R
I
O**

High Rock Farms

Polled Purebred Blondes • Polled Percentage Charolais
AI Sired • Halter Broke

Jason van Tol and Family • Indian River, Ontario

PHONE: 705 743-3912 EMAIL: jayvantol@gmail.com

Ferme Super C

Eleveur de londe d-aquitaine betail Breeder of Blonde d'Aquitaine Cattle

CLEMENCE LANDRY

2738 Rang Bord De L'eau, Ste-Clothilde de Horton, Quebec

Ph: 819-336-5503

**Q
U
E
B
E
C**

PINE RIDGE FARM

Quality Fullblood & Purebred Cattle
Available by Private Treaty

• **Gerald Lynott** •

Ph: 819.827.0527
12 Pine Ridge, Cantley, QC J8V 3C8

Polled & Horned Fullbloods & Purebred Blonde d'Aquitaine Cattle

Blonde Lady Farm

Ron MacArthur & Family

735 Salisbury Rd,
Moncton, NB
E1E 1C4

Ph: 506-382-6630

Offspring from
the Breed's
Top A.I. Sires!

**N
B**



For your chance to win a **HALF PAGE FOUR COLOR AD** in either the next Canadian Blonde d'Aquitaine Association Blonde Connection or Newsletter (your choice) simply identify these Former Canadian Blonde d'Aquitaine Association Board Members and the Year. The winner will be announced in an upcoming Newsletter. Send entries to fanting@telus.net or fax to 403-289-3886. If more than one correct entry, a draw for the winner will be made.

Be sure to include your name and contact information!!

What's **BRED** in the **BEEF**



Beef genomics are providing the key to superior cattle.

Reprinted courtesy Reach & Discover

Testing an animal for certain traits before breeding can be tantamount to killing the goose that laid the golden egg.

“You have to slaughter the cow to know if its meat is tender – and then it’s pretty tough to breed it,” says Reynold Bergen of the Alberta Beef Producers, with a laugh. For that reason, and because when dealing with cattle it can take years to get a sense of a bloodline’s genetic merit, there’s great potential benefit to bovine genomic research.

Since the U.S. National Institute of Health announced in 2004 that the bovine genome had been sequenced at the Baylor College of Medicine in Texas, Alberta researchers have been playing a significant role in the international effort to turn the genome’s three billion base pairs into a recipe for superior beef and dairy cattle.

Dr. Stephen Moore, Chair of Bovine Genomics for the University of Alberta’s Beef Genomics Initiative, and his team have made great strides in the past few years.

“We’ve been looking at the genetic basis of production efficiency and product quality,” he explains. “We have identified a number of genetic markers that relate to important economic traits.”

Moore has taken the University of Alberta initiative from a one-man operation when he arrived in 1999 to a thriving hub of activity that is building local, national, and international partnerships. His team has grown to about 30 researchers, including students, technicians, and three other professors.

LINKING MARKERS AND TRAITS

One of those is Dr. Zhiquan Wang, Associate Professor of Quantitative and Statistical Genetics. He has helped make use of the massive amounts of molecular data that are being generated by the research. Noting that “data is of no use if you can’t use it,” he’s lent his expertise to developing an effective data management and processing system.

Although the initiative’s focus remains on beef cattle, Wang’s 13 years of experience in dairy research has also led to new projects. “The opportunities in bovine genomics should not be missed in the dairy industry. It’s the same animal, the same genome, so some of the research may apply,” he says.

The dairy industry, he points out, has a much more established recording system for tracking performance and pedigree that allows researchers to trace backwards through many generations with accuracy. Access to such records can provide important clues about the inheritance of genetic markers that affect economically important traits.

The result will be simple, cost-effective tests that offer valuable genetic insight.

“From a drop of blood we will be able to scan the DNA and structure, and from birth we can judge that animal’s worth: does the animal have a good genetic architecture, a good constitution which can bring production to a higher level?” Wang says. “This will be economically very beneficial to producers.” In addition to cutting years off predicting an animal’s genetic merit, accuracy in breeding will also be improved. “Previously, without knowing the bovine genome, we only used the phenotype records obtained from the animal and its relatives to predict the genotypic value of the animal,” Wang says. “For some economically important traits, we can only observe the phenotype from one sex – milk production in the female is a good example – but of course the bull is also a genetic contributor.”

According to Bergen, the promise of DNA testing is generating excitement. “Some producers are ready to jump on the new technology, especially in the purebred industry,” he says, noting, however, that there’s still some skepticism. “Others have a wait-and-see attitude.”

From the sound of it, they won’t have to wait long. As Wang asserts, “The work is moving very fast.”

VALIDATING FINDINGS

According to Moore, his team has developed at least a dozen tests – one of which has already been fully patented and others are well on their way.



The patented test relates to a genetic marker for body condition and fat that was first validated in dairy cattle – again because the structure of the dairy industry facilitates easier tracking – but will also be validated in beef cattle.

“Nothing is going out of this lab without independent validation tests,” Moore says. A Canadian system of validation, similar to one being used at Cornell University in the U.S., is under development. The system will ensure each gene-marker test is tried on a minimum of 1,000 animals from an unrelated population – probably two or three separate populations, he notes – before being released on the market.

“We want to apply some rigour, in order to ensure people get what they pay for.”

GENE-TO-GENE INTERACTION

Moore also wants to ensure the tests for individual markers are used in combination. “Unless you understand how these things are interacting, you can make mistakes,” he explains. “Animals have got to perform well in a number of circumstances.” For example, breeding only for lean animals could lead to females with reproductive problems.

Therefore, just as producers don’t select based on a single trait, the genetic tests should not be marketed in isolation

from one another. Moore envisions “suites” of diagnostic tests to avoid unintended consequences.

In 2006, the University of Alberta entered into a commercial partnership with the United States Department of Agriculture and the University of Missouri to conduct research for a U.S. company called Illumina. Moore explains researchers will make use of new technology to analyze tens of thousands of mutations together to understand gene-to-gene interaction – and whether a mutation in one gene will adversely or beneficially affect another.

He calls this “the next big thing.” “Ultimately, this will allow researchers to assess the genome of an animal as a whole. The practical application will result in a test that can predict how an animal’s offspring will perform.”

Pointing to the tremendous cost-saving to producers of such a test, he adds, “It’s going to be bigger than anything anybody has seen before.”

And that test could be right around the corner. Moore says the collaborators are in a race to the finish line, and he expects results to start coming in soon. Of course, months of analysis and validation will follow before a test is ready for the commercial market.

In addition, Moore, who is also the Scientific Director of Alberta Prion Research, hopes to release findings in 2008 from another study into susceptibility and resistance to BSE and chronic wasting disease, for which genetic samples from the United Kingdom are being used.

Bergen believes this new technology won’t completely supplant traditional selection methods. “Other things like environment are always going to affect how genes behave,” he notes. “Ideally producers can take the traditional methods such as EPDs (expected progeny differences) and the new genetic marker tests, and down the road merge them into one excellent predictor.” It all adds up to better beef.

Reprinted courtesy Reach & Discover





AS 2008 ROLLS ON, AN AIR OF OPTIMISM IS ENTERING AGRICULTURE.

Commodity prices are impacting us the greatest. Grains and oil seeds have gone to new record highs. This can only mean good things. The cattle industry however is seeing some of the lowest prices in recent times, even during BSE prices were not at the same levels as now, considering input costs.

"The ray of sunshine that I see in this is that I am a Blonde d'Aquitaine breeder and raising the best quality of beef on the market."

**Dave Gerega - President
Manitoba & Saskatchewan
Blonde Association**

The recent rise in consumer awareness of quality and safety and nutritional value of the foods they buy has put our product in high demand. The natural beef and organic beef market is strong and growing steadily. There are companies out there that pay a premium for high quality lean beef. The protocols that are needed to qualify for being in these programs are stringent and give the consumer the peace of mind that the beef they are buying is locally grown, safe and nutritious. Being in the Blonde d'Aquitaine business gives us a clear advantage over other breeds. Our breed has the growth, with the high lean meat yield that commands the highest premiums. In the past years at the Douglas Bull test station the Blonde d'Aquitaine animals have captured the highest lean meat yield score of all breeds tested.

There are feedlots that do pay extra for Blonde d'Aquitaine calves. For the producer that finishes out his own

animals there are yet more bonuses paid to have a farm to plate traceability. The purebred producer has now an extra selling point to the commercial sector. The bulls can give the commercial operator a calf that will always top the market. The females can be sold to commercial producers, this to increase the higher Blonde d'Aquitaine blood line in that herd. The purer the blood line, the higher the lean meat yield.

I think the time has come for the Blonde d'Aquitaine breed. Don't sit back. Spread the good news around and take the opportunities that are out there. Call a Canadian Blonde d'Aquitaine Association or Provincial Blonde d'Aquitaine Association board member today to get full details.

Dave Gerega - President
Man-Sask Blonde d'Aquitaine
Association

NOTICE TO BUYERS AND SELLERS OF BREEDING CATTLE

Sellers of purebred and registered animals of recognized breeds in Canada, are bound by the **ANIMAL PEDIGREE ACT**. A list of recognized breeds and authorized breed associations is available from the Agriculture and Agri-Food Canada website, www.agr.gc.ca/redmeat/apamain.htm

The **ANIMAL PEDIGREE ACT** makes it a federal offence to sell an animal of a recognized breed as purebred, registered, or eligible to be registered if it is not. An exception may exist where a foreign registered animal is clearly represented as such to the buyer.

The term "purebred" is a confirmation of genetic background and adherence to breed characteristics, in accordance with requirements of the Act and the bylaws of the authorized breed association. The term "registered" is confirmation that all the rules of eligibility of the authorized breed association in Canada have been met. If an animal of a recognized breed is sold as purebred, registered or eligible to be registered, the seller is obligated to provide a duly transferred certificate of registration to the buyer not later than six months after the sale.

BRILEEN HILL FARMS

PRODUCING QUALITY BLONDE SEEDSTOCK!

- Fullblood & Purebred Heifers For Sale by Private Treaty
- Seeking Fancy Blonde Influenced Feeder Calves

For Information, Contact:

BRILEEN HILL FARMS
BRIAN DOWN
Ph: 613-392-7052
 Fax: 613-392-1744
 R.R. 3, Trenton, ON K8V 5P6

GOLF - LADIES & GENTLEMAN

It is a popular myth that the name of the popular Scottish game, "Golf", stands for "Gentlemen Only, Ladies Forbidden." The word "golf" originates from medieval Scottish & Dutch dialects. Back before the creation of dictionaries, there was no standardized spelling so it is believed that word golf originates from Dutch word "kolf" or "kolve" which meant "club." Later on old Scots dialect transformed the word into "gouf" or "golfe."

Sire 2008 CANADIAN BLONDE D'AQUITAINE Summary

2008



Walt Browning

Fantome, Canada's first Blonde bull was imported in 1971

THIS SUMMARY REPRESENTS BULLS WITH MORE THAN 15 PROGENY •

The complete Blonde d'Aquitaine Sire Summary can be found online at: www.biobeef.com •

Sire Summary: Compiled by Beef Improvement Ontario (BIO) •

PROVEN sires (> 15 calves sired)		Prog					GProg		Mat.					
(Evaluated 2008-02-08)		Herds	CE	BW	WG	YG	Herds	CE	Milk	REA	IMF	BFAT	SC	HT
AMARYLLIS NANCY NOEL		%wb	58	56	22	23		54	92			30	91	97
reg: R 4253	Bdate: 19880613	71	BIO EPD -1.1	0.6	23.0	28.0	29.0	0.1	23.9			-1.1	-0.4	0.6
tattoo: DRR 36X		19	acc 80	93	86	77	9	66	62			61	70	69
AMBER DJANGO 32D		%wb	61	49	28	22		76	17					
reg: D 6694	Bdate: 19940327	59	BIO EPD -0.9	1.0	24.0	28.0	38.0	1.8	11.2					
tattoo: AMRS 32D		3	acc 76	92	76	60	3	62	68					
BAMBERG LOBSTER 14A		%wb	54	79	5	8		48	34	75		56	7	84
reg: R 6850	Bdate: 19910525	78	BIO EPD -1.3	-0.8	16.0	18.0	49.0	-0.3	13.9	0.7		-1.0	-2.4	0.1
tattoo: MW 14A		1	acc 79	94	88	77	1	61	70	10		12	17	77
BEAU BOIS AIME 26A		%wb	37	32	8	15		26	58			98	52	92
reg: R 6614	Bdate: 19910310	27	BIO EPD -2.3	1.9	18.0	24.0	5.0	-1.9	16.9			-0.5	-1.3	0.4
tattoo: VBLB 26A		10	acc 68	87	51	50	2	49	37			44	59	56
BEAU BOIS BAMBOU 34B		%wb	23	30	1	1		63	96					
reg: R 7655	Bdate: 19920429	25	BIO EPD -3.3	2.0	-1.0	-7.0	67.0	0.7	26.7					
tattoo: VBLB 34B		2	acc 79	84	81	72	2	70	78					
BEAU BOIS BOBY 7B		%wb	25	27	34	31		10	1			88	38	75
reg: R 7431	Bdate: 19920111	20	BIO EPD -3.2	2.2	26.0	32.0	14.0	-3.8	3.8			-0.8	-1.4	0.0
tattoo: VBLB 7B		1	acc 57	83	63	59	3	53	56			48	62	59
BEAU BOIS CAFE 26C		%wb	1	1	93	94		27	20	80	61	36	63	93
reg: R 8616	Bdate: 19930215	54	BIO EPD -9.7	6.2	44.0	69.0	10.0	-1.8	11.8	0.7	-0.3	-1.1	-1.1	0.4
tattoo: VBLB 26C		14	acc 75	92	83	71	3	49	49	14	14	53	65	63
BEAU BOIS CANCAN 44C		%wb	37	11	42	16		81	73			90	49	
reg: R 8730	Bdate: 19930327	84	BIO EPD -2.3	3.5	28.0	24.0	13.0	2.3	19.1			-0.8	-1.3	
tattoo: VBLB 44C		6	acc 81	94	74	61	3	59	54			22	30	
BELLEVUE'S KENWORTH 15K		%wb	2	25	6	5		5	32					
reg: [CAN]R15887	Bdate: 20000108	71	BIO EPD -8.2	2.3	16.0	15.0	10.0	-4.9	13.7					
tattoo: MDD 15K		4	acc 78	93	87	74	1	49	50					
BFC IGHA 1E		%wb	17	30	33	43		42	34	99	34	5	17	30
reg: R 32	Bdate: 19730325	91	BIO EPD -3.8	2.0	26.0	36.0	74.0	-0.7	13.9	1.3	-0.3	-1.3	-1.9	-0.2
tattoo: BFC 1E		18	acc 88	96	89	87	26	87	88	35	13	71	78	77
BILTONS BEN 19B		%wb	25	30	35	55		54	1					
reg: D 4767	Bdate: 19920209	18	BIO EPD -3.2	2.0	26.0	40.0	13.0	0.1	1.2					
tattoo: SMB 19B		2	acc 56	80	56	50	3	47	51					
BLON DELL 38D		%wb	11	35	75	81		12	25	50	22	77	40	75
reg: R 10723	Bdate: 19940215	53	BIO EPD -4.6	1.7	36.0	54.0	1.0	-3.5	12.6	0.4	-0.3	-0.9	-1.4	0.0
tattoo: KJM 38D		2	acc 74	92	84	55	1	45	25	13	13	15	18	18
BNO CERYL 24C		%wb	86	95	78	80		81	12			93	19	86
reg: R 9226	Bdate: 19930330	119	BIO EPD 1.0	-2.7	37.0	53.0	35.0	2.3	10.2			-0.7	-1.8	0.2
tattoo: BNO 24C		1	acc 84	96	92	72	1	68	71			48	61	58
BNO COCO 45C		%wb	88	88	13	62		81	61			81	38	95
reg: R 9479	Bdate: 19930501	192	BIO EPD 1.3	-1.6	20.0	43.0	2.0	2.3	17.3			-0.9	-1.4	0.5
tattoo: BNO 45C		1	acc 90	97	53	51	1	71	31			48	62	59
BNO DON 25X		%wb	92	93	18	8		83	29			89	55	10
reg: R 5401	Bdate: 19880923	22	BIO EPD 1.9	-2.3	22.0	19.0	65.0	2.5	13.2			-0.8	-1.2	-0.6
tattoo: BNO 25X		4	acc 68	84	72	66	3	69	77			52	62	60
BNO FERN 1F		%wb	3	1	85	87		30	19			38	16	30
reg: R 13035	Bdate: 19960101	140	BIO EPD -6.9	6.6	39.0	60.0	8.0	-1.6	11.5			-1.1	-1.9	-0.2
tattoo: BNO 1F		3	acc 86	96	92	73	2	58	50			30	39	37
BNO GARBO 513X		%wb	21	45	3	27		92	12			93	29	24
reg: D 1566	Bdate: 19880524	155	BIO EPD -3.5	1.2	14.0	30.0	64.0	3.8	10.1			-0.7	-1.6	-0.3
tattoo: BNO 513X		2	acc 88	97	94	85	1	68	70			48	62	59
BNO KEN 57K		%wb	81	85	64	49		96	75	47	97	90	1	4
reg: [CAN]R15786	Bdate: 20000302	30	BIO EPD 0.6	-1.3	32.0	38.0	0.0	4.8	19.4	0.4	-0.1	-0.8	-3.5	-0.9
tattoo: BNO 57K		1	acc 66	87	71	65	0	32	30	36	36	41	51	49
BNO KRIST 94K		%wb	75	79	99	98		90	87					
reg: [CAN]R15789	Bdate: 20000313	28	BIO EPD 0.0	-0.8	53.0	84.0	0.0	3.4	22.0					
tattoo: BNO 94K		1	acc 63	85	49	48	0	31	25					
BNO WAYNE 399W		%wb	2	1	21	45		75	96			87	84	64
reg: R 3982	Bdate: 19870515	29	BIO EPD -7.9	6.9	23.0	37.0	28.0	1.7	26.5			-0.8	-0.7	-0.1
tattoo: BNO 399W		3	acc 62	87	72	74	6	56	61			66	74	74

PROVEN sires (> 15 calves sired)		Prog				GProg				Mat.				
(Evaluated 2008-02-08)		Herds	CE	BW	WG	YG	Herds	CE	Milk	REA	IMF	BFAT	SC	HT
BNO YOGI 483X		%wb	13	12	44	75		51	15			94	71	86
reg: R 4534	Bdate: 19880418	211	BIO EPD	-4.3	3.4	28.0	49.0	79.0	-0.1	10.7		-0.7	-1.0	0.2
tattoo: BNO 483X		39	acc	89	97	94	84	18	79	82		48	62	59
BOM KARL 82K		%wb	58	41	54	54		74	20					
reg: [CAN]R15667	Bdate: 20000217	56	BIO EPD	-1.1	1.4	30.0	40.0	1.0	1.6	11.7				
tattoo: BOM 82K		2	acc	79	91	81	73	1	41	36				
BOM MOE 23M		%wb	44	27	87	73		63	39			23	13	63
reg: [CAN]R16607	Bdate: 20020219	16	BIO EPD	-1.9	2.2	40.0	48.0	0.0	0.7	14.6		-1.2	-2.1	-0.1
tattoo: BOM 23M		1	acc	53	79	67	64	0	31	32		49	62	59
BOV MAJESTY OF THE ALPS 1E		%wb	12	20	82	90		27	87			26	30	95
reg: R 127	Bdate: 19731219	70	BIO EPD	-4.5	2.7	38.0	64.0	80.0	-1.8	22.0		-1.1	-1.6	0.5
tattoo: BOV 1E		17	acc	83	93	90	85	15	79	82		28	35	35
BRYDOWNS ELMO 149E		%wb	93	76	56	51		6	42	97	94	74	77	82
reg: R 12790	Bdate: 19950301	29	BIO EPD	2.2	-0.6	30.0	39.0	18.0	-4.4	14.8	1.1	-0.2	-0.9	-0.1
tattoo: BDB 149E		5	acc	66	87	73	68	3	44	48	43	13	49	63
BRYDOWNS HARVEY 203H		%wb	37	9	50	21		6	74	22	21	38	76	62
reg: R 14777	Bdate: 19980312	37	BIO EPD	-2.3	3.7	29.0	27.0	1.0	-4.6	19.3	0.2	-0.4	-1.1	-0.9
tattoo: BDB 203H		3	acc	72	90	78	69	1	42	40	48	48	52	58
CANADIAN GOLD POLLED DANDY 10G		%wb	5	8	18	14		3	29	74	10	69	27	30
reg: R 13776	Bdate: 19970315	41	BIO EPD	-5.9	3.8	22.0	23.0	0.0	-5.5	13.2	0.6	-0.4	-1.0	-1.6
tattoo: RAP 10G		3	acc	68	88	29	36	0	28	11	37	37	43	55
CANADIAN RADAR 5W		%wb	44	65	73	70		95	89					
reg: R 5163	Bdate: 19870220	55	BIO EPD	-1.9	0.1	35.0	47.0	15.0	4.5	23.0				
tattoo: CBB 5W		12	acc	77	92	44	41	5	67	54				
CANADIAN ROCKY 01T		%wb	7	11	46	47		9	8			77	57	88
reg: R 2992	Bdate: 19850512	109	BIO EPD	-5.3	3.5	29.0	37.0	19.0	-3.9	8.9		-0.9	-1.2	0.3
tattoo: CBB 01T		19	acc	85	95	70	61	10	78	63		47	56	54
CIA JAGUAR 1F		%wb	1	2	69	71		3	10	99	23	72	94	96
reg: R 86	Bdate: 19740118	189	BIO EPD	-11.4	5.3	34.0	47.0	97.0	-5.9	9.5	1.2	-0.3	-1.0	-0.2
tattoo: CIA 1F		46	acc	91	97	94	87	17	82	85	42	24	67	75
CLARE ELL MARCUS 27G		%wb	80	68	14	7		20	6	96	52	82	17	56
reg: R 13774	Bdate: 19970310	17	BIO EPD	0.5	-0.1	20.0	18.0	2.0	-2.5	8.0	1.0	-0.3	-0.9	-1.9
tattoo: CBF 27G		3	acc	56	81	54	52	1	33	29	41	41	49	62
CLARE ELL MAX 49C		%wb	6	27	10	52		34	1	96	3	4	63	96
reg: R 9344	Bdate: 19930417	86	BIO EPD	-5.7	2.2	19.0	39.0	16.0	-1.3	4.9	1.0	-0.5	-1.3	-1.1
tattoo: CBF 49C		28	acc	85	95	86	79	6	66	64	42	38	66	72
CLASSIC LUKE 3L		%wb	66	58	8	8		73	72	39	95	89		
reg: [CAN]D12750	Bdate: 20010221	18	BIO EPD	-0.6	0.5	18.0	19.0	1.0	1.5	19.0	0.3	-0.2	-0.8	
tattoo: SA 3L		1	acc	50	78	67	48	1	25	18	10	10	12	
CO CO POWER MAN 1A		%wb	7	37	3	17		1	3			5	87	85
reg: R 7060	Bdate: 19910306	21	BIO EPD	-5.4	1.6	14.0	25.0	5.0	-9.6	6.9		-1.3	-0.6	0.2
tattoo: MMJ 1A		2	acc	60	84	72	71	1	41	45		49	62	60
CONRICH PHILIP 6X		%wb	89	82	44	58		72	56			38	70	97
reg: R 4487	Bdate: 19880515	34	BIO EPD	1.4	-1.0	28.0	41.0	19.0	1.4	16.6		-1.1	-1.0	0.7
tattoo: DES 6X		7	acc	65	87	37	36	5	58	50		15	20	19
CROCUS HILL CALIBRE 5C		%wb	91	90	98	91		2	10			99	92	
reg: D 5931	Bdate: 19930325	63	BIO EPD	1.7	-1.8	52.0	65.0	3.0	-6.3	9.5		-0.3	-0.3	
tattoo: FCS 5C		3	acc	75	92	78	52	2	43	29		12	17	
CRYSTAL LAVERNE 3L		%wb	84	84	39	44		18	52	91	5	92	73	14
reg:	Bdate: 20010120	18	BIO EPD	0.8	-1.2	27.0	36.0	4.0	-2.7	16.1	0.9	-0.4	-0.8	-0.9
tattoo: PFER 3L		1	acc	59	82	75	66	1	40	45	52	52	57	68
CYR JULIUS 790J		%wb	79	61	74	12		74	46			58	22	24
reg: R 14899	Bdate: 19990422	28	BIO EPD	0.4	0.3	36.0	22.0	16.0	1.6	15.3		-1.0	-1.8	-0.3
tattoo: CYR 790J		3	acc	66	86	79	77	2	50	60		72	80	78
DDD CLAY 12H		%wb	2	16	63	80		4	4	96		3	6	82
reg: R 365	Bdate: 19760402	52	BIO EPD	-7.6	3.0	32.0	53.0	60.0	-5.1	7.1	1.0	-1.4	-2.5	0.1
tattoo: DDD 12H		11	acc	82	93	83	79	17	82	80	12	60	69	68

PROVEN sires (> 15 calves sired)		Prog				GProg				Mat.				
(Evaluated 2008-02-08)		Herds	CE	BW	WG	YG	Herds	CE	Milk	REA	IMF	BFAT	SC	HT
DJ XRADIATION 29X		%wb	3	4	76	84		39	55	51		4	22	97
reg: R 4738	Bdate: 19880418	36	BIO EPD	-6.8	4.5	36.0	57.0	7.0	-0.9	16.5	0.4	-1.3	-1.7	0.6
tattoo: EKE 29X		9	acc	75	90	71	68	5	62	57	14	38	40	45
DJ ZAMBUCA 33Z		%wb	2	1	78	88		1	1	87	1	26	91	99
reg: R 6642	Bdate: 19900509	331	BIO EPD	-7.9	6.2	37.0	61.0	92.0	-9.8	-0.7	0.8	-0.5	-1.1	-0.5
tattoo: EKE 33Z		37	acc	94	98	96	95	13	84	86	86	72	88	92
DJK BARMAN 31B		%wb	69	28	44	43		70	33	60	90	68	30	32
reg: R 8115	Bdate: 19920408	67	BIO EPD	-0.4	2.1	28.0	36.0	16.0	1.3	13.8	0.5	-0.2	-1.0	-1.6
tattoo: DJK 31B		7	acc	81	93	84	75	6	62	58	12	12	14	17
DJK DR HOOK 21D		%wb	6	3	44	55		24	69			78	40	
reg: R 10643	Bdate: 19940313	54	BIO EPD	-5.8	4.9	28.0	40.0	5.0	-2.1	18.5		-0.9	-1.4	
tattoo: DJK 21D		8	acc	76	92	69	52	2	46	40		12	17	
DOUBLE F DEMYTREE 11D		%wb	44	81	78	55		96	73					
reg: D 6550	Bdate: 19940220	27	BIO EPD	-1.9	-0.9	37.0	40.0	8.0	4.9	19.2				
tattoo: FERG 11D		2	acc	65	87	68	49	6	50	48				
DOUBLE F STEVE 5Z		%wb	89	95	35	32		79	1			87	65	85
reg: D 2530	Bdate: 19900312	133	BIO EPD	1.5	-2.8	26.0	32.0	38.0	2.0	5.3		-0.8	-1.1	0.2
tattoo: FERG 5Z		1	acc	86	96	94	78	1	62	68		48	62	59
DOUBLE L ALEXANDER 7A		%wb	14	67	3	13		16	26	64		75	17	22
reg: D 3772	Bdate: 19910219	33	BIO EPD	-4.2	0.0	13.0	23.0	11.0	-2.9	12.7	0.5	-0.9	-1.9	-0.3
tattoo: LNL 7A		13	acc	71	89	72	61	4	55	57	31	35	45	43
DOUBLE L WEE WILLY 9W		%wb	99	98	11	43		97	27	73	26	49	30	76
reg: C 15234	Bdate: 19870310	118	BIO EPD	6.4	-4.6	19.0	36.0	61.0	5.4	12.9	0.6	-0.3	-1.0	-1.6
tattoo: LNL 9W		21	acc	85	96	88	84	13	75	79	36	27	56	60
DOUBLE L XAMPLE 22X		%wb	3	14	85	96		1	19	85		35	65	98
reg: C 15975	Bdate: 19880330	72	BIO EPD	-7.2	3.2	39.0	75.0	18.0	-7.4	11.5	0.8	-1.1	-1.1	0.8
tattoo: LNL 22X		7	acc	80	93	76	73	4	66	64	52	67	73	74
EUROCAN FAN 01E		%wb	6	34	37	19		43	25					
reg: R 40	Bdate: 19730818	16	BIO EPD	-5.6	1.8	26.0	26.0	16.0	-0.6	12.6				
tattoo: EUR 01E		10	acc	53	81	55	41	6	52	58				
FERGIE 8M		%wb	53	47	82	62		3	46	53	22	16	89	84
reg: [CAN]R16779	Bdate: 20020423	101	BIO EPD	-1.4	1.1	38.0	43.0	9.0	-5.4	15.3	0.5	-0.3	-1.2	-0.5
tattoo: FERG 8M		2	acc	83	95	92	90	1	47	52	84	84	87	85
FOR CHARLOT 90C		%wb	80	70	37	9		87	82			90	80	5
reg: R 10322	Bdate: 19931027	48	BIO EPD	0.5	-0.2	26.0	19.0	8.0	3.0	20.7		-0.8	-0.8	-0.8
tattoo: FOR 90C		3	acc	73	90	71	56	1	43	41		35	45	43
FOR HUSSARD 66H		%wb	93	92	42	47		6	37					
reg: D 11028	Bdate: 19981212	28	BIO EPD	2.1	-2.1	28.0	37.0	1.0	-4.4	14.3				
tattoo: FOR 66H		1	acc	74	87	66	45	1	45	33				
FORT ELLICE SAMARAI 56X		%wb	61	63	19	16		65	95	94	96	8	8	66
reg: R 5050	Bdate: 19880425	117	BIO EPD	-0.9	0.2	22.0	25.0	71.0	0.9	25.3	0.9	-0.1	-1.3	-2.3
tattoo: ABF 56X		29	acc	85	96	81	82	15	76	76	65	21	76	76
FORTY ACRE NUZZLER 13N		%wb	37	67	12	23		44	40					
reg:	Bdate: 20030213	27	BIO EPD	-2.3	0.0	20.0	28.0	0.0	-0.5	14.7				
tattoo: FAB 13N		1	acc	58	83	72	51	0	24	12				
GELSTAR 801X "T"		%wb	27	23	4	12		68	93	91	94	7	70	85
reg: R 4339	Bdate: 19880216	140	BIO EPD	-3.1	2.5	15.0	22.0	49.0	1.1	24.6	0.9	-0.2	-1.3	-1.0
tattoo: GEL 801X		32	acc	90	96	91	85	14	81	80	28	14	68	76
GELSTAR 803X "T"		%wb	18	55	12	13		1	1	79		90	22	87
reg: R 4308	Bdate: 19880217	94	BIO EPD	-3.7	0.7	20.0	23.0	15.0	-9.7	2.5	0.7	-0.8	-1.8	0.2
tattoo: EL 803X		23	acc	82	95	90	83	7	61	56	60	70	74	78
GELSTAR 807X		%wb	1	1	77	90		2	1			49	73	99
reg: R 4325	Bdate: 19880222	23	BIO EPD	-10.4	7.4	36.0	63.0	5.0	-6.0	1.3		-1.0	-1.0	1.0
tattoo: GEL 807X		3	acc	65	85	59	57	3	53	47		42	52	50
GELSTAR 817X "T"		%wb	92	90	42	57		14	1	67	38	18	77	22
reg: R 4313	Bdate: 19880405	251	BIO EPD	1.9	-1.8	28.0	41.0	64.0	-3.2	1.1	0.5	-0.3	-1.2	-0.9
tattoo: EL 817X		18	acc	92	98	95	93	8	79	82	74	54	82	86

PROVEN sires (> 15 calves sired) (Evaluated 2008-02-08)		Prog Herds	CE	BW	WG	YG	GProg Herds	Mat. CE	Milk	REA	IMF	BFAT	SC	HT
GELSTAR SHERIFF 423S		%wb	93	84	1	3		65	49			2	3	24
reg: R 2170	Bdate: 19840410	23	BIO EPD	2.3	-1.2	5.0	12.0	7.0	0.9	15.7		-1.4	-2.8	-0.3
tattoo: GEL 423S		7	acc	63	83	66	64	2	53	45		59	68	66
HANOVER BE JAY 50B		%wb	12	1	72	45		1	1			55	26	95
reg: R 9139	Bdate: 19920407	74	BIO EPD	-4.4	6.9	35.0	37.0	48.0	-8.7	-4.5		-1.0	-1.6	0.5
tattoo: HSF 50B		1	acc	81	94	83	80	2	71	76		79	85	84
HANOVER CONCORD 23C		%wb	11	21	98	99		86	98	55		88	98	75
reg: R 10147	Bdate: 19930123	53	BIO EPD	-4.6	2.6	51.0	85.0	14.0	2.8	28.8	0.5	-0.8	0.7	0.0
tattoo: HSF 23C		2	acc	76	91	86	83	3	59	62	45	50	59	38
HANOVER EL PASO 103E		%wb	7	3	89	91		1	9					
reg: R 12526	Bdate: 19951003	40	BIO EPD	-5.3	4.7	41.0	64.0	4.0	-8.9	9.3				
tattoo: HSF 103E		2	acc	72	89	81	72	2	51	49				
HANOVER ENCORE 5E		%wb	34	28	99	99		6	11	78	69	13	94	99
reg: R 11375	Bdate: 19950115	138	BIO EPD	-2.5	2.1	57.0	90.0	17.0	-4.4	9.8	0.7	-0.3	-1.2	-0.3
tattoo: HSF 5E		12	acc	88	96	92	85	6	63	63	56	56	61	60
HANOVER EXPRESS 5C		%wb	5	4	67	68		7	99	73	92	84		78
reg: R 10237	Bdate: 19930103	22	BIO EPD	-5.9	4.5	33.0	46.0	9.0	-4.3	30.8	0.6	-0.2	-0.9	0.0
tattoo: HSF 5C		9	acc	69	86	71	61	2	50	48	10	10	12	16
HANOVER FASINATOR 49C		%wb	92	93	4	3		91	2			94	25	89
reg: R 10151	Bdate: 19930302	80	BIO EPD	2.0	-2.3	15.0	11.0	7.0	3.6	5.7		-0.7	-1.7	0.3
tattoo: HSF 49C		3	acc	82	94	86	78	2	58	54		22	30	28
HANOVER GHOSTBUSTER 83G		%wb	56	49	72	68		2	35	16	91	7	80	23
reg: R 13202	Bdate: 19970501	31	BIO EPD	-1.2	1.0	35.0	46.0	8.0	-6.4	14.0	0.1	-0.2	-1.3	-0.8
tattoo: HSF 83G		5	acc	69	88	72	59	1	48	50	19	19	22	30
HANOVER HAWKEYE 5H		%wb	56	65	41	34		5	1	82	28	74	17	66
reg: R 14100	Bdate: 19980112	25	BIO EPD	-1.2	0.1	28.0	33.0	3.0	-4.9	2.6	0.7	-0.3	-0.9	-1.9
tattoo: HSF 5H		2	acc	63	86	75	56	2	41	40	10	10	12	17
HANOVER KODIAK 24K		%wb	49	78	4	49		2	8	96	32	67	62	67
reg: [CAN]R15538	Bdate: 20000208	74	BIO EPD	-1.6	-0.7	15.0	38.0	5.0	-6.7	8.9	1.0	-0.3	-1.0	-1.2
tattoo: HSF 24K		2	acc	80	94	88	77	1	51	51	60	60	65	74
HANOVER SPECIAL 25D		%wb	27	56	77	88		16	67	94	10	50	47	66
reg: R 10295	Bdate: 19940202	185	BIO EPD	-3.1	0.6	36.0	61.0	55.0	-3.0	18.1	0.9	-0.4	-1.0	-1.4
tattoo: HSF 25D		11	acc	91	97	95	90	6	75	81	63	63	67	71
HARKDALE CEEBEE GAMEBOY 20G		%wb	89	73	73	40		99	99					
reg: R 13318	Bdate: 19970201	18	BIO EPD	1.4	-0.4	35.0	35.0	16.0	6.4	30.0				
tattoo: GSH 20G		1	acc	67	80	40	36	4	50	50				
HARKDALE HIGH ROLLER 17H		%wb	53	35	92	81		32	88	90	7	58	34	15
reg: R 14765	Bdate: 19980201	137	BIO EPD	-1.4	1.7	43.0	54.0	6.0	-1.4	22.5	0.9	-0.4	-1.0	-1.5
tattoo: GSH 17H		2	acc	87	96	92	80	2	50	38	45	45	60	70
HARMONIEUX		%wb	13	39	41	72		2	2			82	24	65
reg: R 15	Bdate: 19720224	52	BIO EPD	-4.3	1.5	28.0	48.0	22.0	-6.1	5.6		-0.9	-1.7	-0.1
tattoo: GAS 4D		14	acc	81	93	81	76	11	81	79		25	33	31
HCN DUNDEE 02D		%wb	51	18	85	77		81	96					
reg: R 9434	Bdate: 19940130	43	BIO EPD	-1.5	2.8	40.0	51.0	33.0	2.2	26.9				
tattoo: HCN 02D		2	acc	72	90	79	64	6	60	69				
HCN EASTWOOD 2E		%wb	92	75	51	44		87	83					
reg: R 12077	Bdate: 19950123	19	BIO EPD	1.9	-0.5	30.0	36.0	6.0	3.0	21.1				
tattoo: HCN 2E		2	acc	59	83	37	35	1	42	35				
HEARTWOODS DUKE OF BEEF 41D		%wb	10	11	86	96		1	3	94	72	4	98	99
reg: R 12530	Bdate: 19940423	57	BIO EPD	-4.8	3.5	40.0	76.0	21.0	-7.4	6.5	0.9	-0.3	-1.3	0.7
tattoo: MAU 41D		1	acc	77	92	87	78	1	59	63	51	12	59	69
HEARTWOODS DYNAMITE 9D		%wb	60	63	8	15		18	5	99	27	8	16	81
reg: R 12529	Bdate: 19940220	127	BIO EPD	-1.0	0.2	18.0	24.0	29.0	-2.7	7.8	1.3	-0.3	-1.3	-1.9
tattoo: MAU 9D		1	acc	88	96	94	88	2	67	69	69	59	74	82
HEARTWOODS EYE CATCHER 10E		%wb	6	3	93	94		18	87	99	4	82	94	97
reg: R 12531	Bdate: 19950214	105	BIO EPD	-5.8	4.8	44.0	70.0	55.0	-2.7	22.2	1.6	-0.5	-0.9	-0.2
tattoo: MAU 10E		14	acc	87	96	91	87	3	72	78	57	37	64	74

PROVEN sires (> 15 calves sired) (Evaluated 2008-02-08)	Prog				GProg				Mat.					
	Herds	CE	BW	WG	YG	Herds	CE	Milk	REA	IMF	BFAT	SC	HT	
HEARTWOODS GOLDEN EYE 43G reg: R 14035 Bdate: 19970328 tattoo: MAU 43G	51 1	%wb acc	19 74	30 92	64 87	75 71	4.0 1	-2.6 47	24.0 47					
HEARTWOODS KAISER 56K reg: [CAN]R16084 Bdate: 2000041E tattoo: MAU 56K	74 2	%wb acc	98 84	98 83	78 90	76 87	4.0 1	1.8 51	17.5 47	1.2 59	-0.3 58	-0.9 64	-1.1 74	0.3 72
HEARTWOODS LONE STAR 16L reg: [CAN]D12508 Bdate: 2001032E tattoo: MAU 16L	22 1	%wb acc	80 62	87 84	83 53	68 54	0.0 0	3.4 38	22.1 36	0.9 49	-0.2 49	-1.0 54	-0.4 65	0.4 62
HEARTWOODS MAXIMIZER 74M reg: [CAN]D13056 Bdate: 2002042E tattoo: MAU 74M	24 1	%wb acc	99 61	98 84	8 70	12 62	0.0 0	3.3 31	20.8 27	1.0 45	-0.3 44	-1.1 50	-1.4 63	-0.4 60
HEARTWOODS MIGHTY MOE 88M reg: [CAN]R16750 Bdate: 20020521 tattoo: MAU 88M	42 1	%wb acc	14 70	43 90	20 71	61 62	0.0 0	-3.1 35	14.6 24	0.4 46	-0.4 46	-1.0 52	-1.2 63	0.0 63
HIGH POINT KOBE 25K reg: [CAN]R15990 Bdate: 2000041E tattoo: CHA 25K	45 2	%wb acc	10 71	55 90	55 57	17 51	1.0 1	-2.6 37	14.6 17	0.2 26	-0.2 26	-1.1 41	-2.6 51	-0.5 49
HUSSARD 1D reg: R 12 Bdate: 19720204 tattoo: CIA 1D	65 25	%wb acc	67 81	41 93	76 86	47 81	99.0 20	1.0 78	6.0 83	0.8 11	-0.3 11	-1.1 42	-1.9 51	-0.2 50
IMP BRADBURY EVAN 7394 reg: R 7394 Bdate: 19890101 tattoo: IMP 7394Y	23 9	%wb acc	73 61	30 83	84 55	95 48	18.0 5	-3.0 50	16.4 54					
IMP HADLEY HANK 1MP 9686 reg: R 9686 Bdate: 19920606 tattoo: IMP 9686B	22 11	%wb acc	25 60	14 82	79 52	79 49	5.0 2	-0.5 36	13.4 31	0.6 20	-0.3 12	-1.3 32	-2.6 41	-0.2 38
IMP KILBOY FRANK 1325Z reg: R 13251 Bdate: 19900220 tattoo: IMP 1325Z	20 4	%wb acc	69 50	59 78	10 59	8 47	2.0 1	0.6 23	13.9 15			-0.6 36	-1.3 46	0.4 44
IMP RAVENSWORTH ULAN 3209R reg: R 3209 Bdate: 19831211 tattoo: IMP 3209R	64 11	%wb acc	4 77	11 92	2 81	2 77	21.0 3	-0.1 53	16.6 47	0.9 21	-0.2 12	-1.2 75	-1.4 81	0.0 80
JA POP 20Y reg: R 5038 Bdate: 19890316 tattoo: JA 20Y	386	%wb	54	63	77	84	188.0	0.2	19.5	0.5	-0.3	-1.0	-0.9	0.6
JA THE BOMBER 6T reg: R 3341 Bdate: 19850510 tattoo: JA 6T	460 56	%wb acc	53 96	43 99	92 98	91 96	154.0 34	-9.2 90	5.8 91			-1.0 93	-0.4 95	0.3 95
JAC MAR YAIZU 32Y reg: R 5091 Bdate: 19890309 tattoo: JMR 32Y	125 1	%wb acc	98 89	96 96	53 86	61 72	1.0 1	3.1 77	14.4 30			-0.6 55	-3.3 65	0.0 63
JCB BEATTY 6B reg: R 8095 Bdate: 19920306 tattoo: JCB 6B	17 1	%wb acc	88 57	72 81	4 38	21 33	15.0 2	0.1 47	9.0 50					
JOCKA HOUBLON 10H reg: R 14148 Bdate: 19980511 tattoo: JOJM 10H	24 1	%wb acc	49 63	32 84	13 64	6 47	1.0 1	-1.8 31	8.0 22					
JOLI KING 41K reg: [CAN]R16458 Bdate: 20000224 tattoo: JOLI 41K	34 2	%wb acc	65 67	15 88	33 55	43 46	0.0 0	-0.9 32	16.0 24	0.5 10	-0.1 10	-0.9 29	-1.6 38	-0.7 36
LAKE VIEW YOKUM 14Y reg: R 5183 Bdate: 19890202 tattoo: GLD 14Y	40 20	%wb acc	98 73	93 90	18 74	7 70	19.0 5	1.1 63	27.0 63	0.8 33		-1.1 54	-0.2 63	-0.1 61
LAMB CAPITAINE 36C reg: R 9724 Bdate: 19930102 tattoo: LAMB 36C	96 2	%wb acc	98 82	96 94	1 86	1 59	21.0 4	3.5 67	28.9 64					
LAMB GASTON 3G reg: R 13367 Bdate: 19970114 tattoo: LAMB 3G	16 2	%wb acc	75 54	35 80	69 67	57 59	4.0 1	-1.2 39	4.6 41			-0.7 52	-0.9 64	0.3 62

PROVEN sires (> 15 calves sired)		Prog				GProg				Mat.				
(Evaluated 2008-02-08)		Herds	CE	BW	WG	YG	Herds	CE	Milk	REA	IMF	BFAT	SC	HT
LAMB JUSTY 7M	%wb		86	89	2	1		95	94			71	87	54
reg: [CAN]R16786 Bdate: 20020213	BIO EPD	17	1.1	-1.7	11.0	-16.0	0.0	4.6	24.8			-1.0	-0.6	-0.2
tattoo: LAMB 7M	acc	2	61	80	42	45	0	32	27			46	60	57
LAVELAINES MISTER FARLEY 45F	%wb		93	94	5	5		97	98	1	17	68	72	22
reg: R 13231 Bdate: 19960417	BIO EPD	38	2.1	-2.4	16.0	14.0	23.0	5.4	28.4	-0.4	-0.4	-1.0	-1.0	-0.3
tattoo: LEM 45F	acc	5	68	89	64	52	3	52	55	26	26	30	39	37
LAVELAINES MR DILLINGER 11D	%wb		92	72	5	1		87	45	18	78	87	73	84
reg: R 10330 Bdate: 19940401	BIO EPD	17	2.0	-0.3	16.0	5.0	3.0	2.9	15.2	0.2	-0.3	-0.8	-0.9	0.1
tattoo: LEM 11D	acc	3	61	83	46	43	1	40	32	20	20	23	31	30
LEB HECTOR BUR JO 10H	%wb		9	37	17	35		30	37	93	34	64	12	
reg: R 340 Bdate: 19760402	BIO EPD	38	-5.0	1.6	21.0	33.0	35.0	-1.6	14.2	0.9	-0.3	-1.0	-2.1	
tattoo: LEB 10H	acc	6	70	89	77	74	5	67	71	36	36	40	41	
LIAHN 85Z	%wb		54	59	40	82		4	5			24	9	19
reg: R 7334 Bdate: 19900405	BIO EPD	48	-1.3	0.4	27.0	54.0	3.0	-5.2	7.7			-1.1	-2.2	-0.4
tattoo: JA 85Z	acc	2	74	91	86	77	1	45	43			54	65	63
LIAHN CHARLIE BROWN 80C	%wb		56	63	86	56		87	91					
reg: R 9201 Bdate: 19930208	BIO EPD	50	-1.2	0.2	40.0	41.0	11.0	2.9	23.4					
tattoo: JA 80C	acc	14	77	91	65	55	4	61	59					
LIAHN CIRBY 211C	%wb		75	59	85	91		92	92			14	76	92
reg: R 9825 Bdate: 19930201	BIO EPD	22	0.0	0.4	40.0	64.0	25.0	3.9	23.9			-1.2	-0.9	0.4
tattoo: JA 211C	acc	1	65	85	58	58	1	54	58			58	68	66
LIAHN FERDINAND 6114F	%wb		34	14	83	62		57	73	99	24	72	13	98
reg: R 13075 Bdate: 19960321	BIO EPD	62	-2.5	3.2	39.0	43.0	13.0	0.3	19.1	1.2	-0.3	-1.0	-2.1	0.8
tattoo: JA 6114F	acc	1	78	93	88	78	2	60	62	48	48	66	74	73
LIAHN FIVE PLUS 61F	%wb		31	20	99	99		54	80	98	53	15	28	97
reg: R 13073 Bdate: 19960101	BIO EPD	18	-2.7	2.7	54.0	93.0	0.0	0.1	20.5	1.1	-0.3	-1.2	-1.6	0.6
tattoo: JA 61F	acc	2	61	83	74	69	0	42	39	57	56	63	72	70
LIAHN POLL CAT	%wb		13	45	73	89		6	7	53	90	67	25	81
reg: D 6041 Bdate: 19930101	BIO EPD	623	-4.3	1.2	35.0	62.0	148.0	-4.4	8.3	0.5	-0.2	-1.0	-1.7	0.1
tattoo: JA 31C	acc	122	97	99	98	95	34	87	90	91	90	93	93	95
LIAHN POLLED FREDDY 655F	%wb		46	72	33	78		30	1	45	9	7	30	59
reg: C 20668 Bdate: 19960131	BIO EPD	177	-1.8	-0.3	26.0	51.0	43.0	-1.6	2.5	0.4	-0.4	-1.3	-1.6	-0.1
tattoo: JA 655F	acc	1	90	97	95	80	1	72	77	55	54	60	70	73
MAEBARBS WILLY 51X	%wb		5	2	73	87		53	95					
reg: R 4742 Bdate: 19880203	BIO EPD	42	-6.0	5.5	35.0	60.0	31.0	0.0	25.6					
tattoo: GAS 51X	acc	7	69	89	29	28	9	61	58					
MAL LAR NATHAN 2N	%wb		9	23	12	31		16	51	70	6	44	19	14
reg: [CAN]R16981 Bdate: 20030115	BIO EPD	41	-5.0	2.5	20.0	31.0	0.0	-2.9	16.0	0.6	-0.4	-1.1	-1.8	-0.5
tattoo: MAL 2N	acc	2	70	90	72	61	0	36	29	45	45	51	63	61
MALRAMS MISTER CODY 1C	%wb		27	28	20	10		44	4					
reg: R 9361 Bdate: 19930514	BIO EPD	51	-3.1	2.1	22.0	20.0	1.0	-0.5	7.1					
tattoo: MRF 1C	acc	2	74	91	38	35	1	56	34					
MAPLE BROOK PEDRO 101Y	%wb		16	3	87	85		1	3	99		94	14	82
reg: R 6266 Bdate: 19891104	BIO EPD	281	-3.9	5.1	40.0	58.0	103.0	-12.7	6.5	1.3		-0.7	-2.0	0.1
tattoo: MBR 101Y	acc	19	93	98	96	94	12	83	87	69		73	81	70
MAPLE CREST SUPREME 1B	%wb		7	35	49	71		57	91	86	36	15	28	96
reg: R 7268 Bdate: 19920104	BIO EPD	262	-5.3	1.7	29.0	47.0	99.0	0.3	23.6	0.8	-0.3	-1.2	-1.6	0.5
tattoo: MCF 1B	acc	71	93	98	95	85	15	82	84	41	26	46	51	54
MAPLE RIDGE TROJAN 3P	%wb		60	39	54	73		1	1			29	89	83
reg: R 1807 Bdate: 19820727	BIO EPD	44	-1.0	1.5	30.0	48.0	44.0	-11.7	-6.4			-1.1	-0.5	0.1
tattoo: MR 3P	acc	4	76	90	84	82	2	66	72			24	30	32
MAPLE VALLEY SIR EMINENT 28G	%wb		54	58	90	75		96	95	97	72	63	86	89
reg: R 13333 Bdate: 19970430	BIO EPD	172	-1.3	0.5	42.0	49.0	26.0	4.8	25.7	1.1	-0.3	-1.0	-0.6	0.3
tattoo: MVF 28G	acc	2	90	97	95	89	2	68	71	83	83	85	90	89
MARMAC FERGIE 16H	%wb		6	12	4	5		16	1	75	6	42	24	68
reg: R 14053 Bdate: 19980520	BIO EPD	25	-5.6	3.4	15.0	15.0	7.0	-2.9	2.4	0.7	-0.4	-1.1	-1.7	0.0
tattoo: MAC 16H	acc	1	64	86	79	74	2	44	49	41	41	45	55	53

PROVEN sires (> 15 calves sired)		Prog				GProg				Mat.					
(Evaluated 2008-02-08)		Herds	CE	BW	WG	YG	Herds	CE	Milk	REA	IMF	BFAT	SC	HT	
MARMACS CAGNEY 27C		%wb	8	34	74	62		34	30	99	11	70	47	66	
reg: R 9021	Bdate: 19930530	80	BIO EPD	-5.2	1.8	36.0	43.0	5.0	-1.3	13.3	1.1	-0.4	-1.0	-1.4	0.0
tattoo: MARM 27C		12	acc	84	94	87	82	3	62	59	48	31	68	77	76
MARMACS MISTER COLOSSAL 9Y		%wb	78	79	3	1		98	85			87	20	10	
reg: R 5068	Bdate: 19890625	54	BIO EPD	0.3	-0.8	13.0	4.0	59.0	5.8	21.7		-0.8	-1.8	-0.6	
tattoo: MARM 9Y		2	acc	75	92	86	86	10	72	79		52	64	62	
MARMACS MR CLAUDE 10X		%wb	58	70	20	23		65	7	17	93	73	72	23	
reg: R 4266	Bdate: 19880622	114	BIO EPD	-1.1	-0.2	22.0	28.0	37.0	0.9	8.3	0.1	-0.2	-0.9	-1.0	-0.3
tattoo: MARM 10X		32	acc	89	96	93	87	9	77	77	49	42	79	84	84
MAU ATLAS 8A		%wb	48	24	23	45		32	90			8	65	99	
reg: R 7910	Bdate: 19910328	51	BIO EPD	-1.7	2.4	23.0	37.0	17.0	-1.4	23.1		-1.3	-1.1	0.9	
tattoo: MAU 8A		1	acc	74	91	85	70	1	51	53		53	65	62	
MLR HERC 7H		%wb	40	76	1	1		84	4						
reg: R 14197	Bdate: 19980501	48	BIO EPD	-2.1	-0.6	-1.0	7.0	39.0	2.6	7.2					
tattoo: MLR 7H		1	acc	73	90	80	57	1	57	68					
MNJ ZEUSS 2Z		%wb	13	4	39	46		97	97						
reg: R 6457	Bdate: 19900222	64	BIO EPD	-4.3	4.5	27.0	37.0	56.0	5.3	27.5					
tattoo: MNJ 2Z		6	acc	79	84	88	82	5	66	73					
MVF CRACKER JACK 80E		%wb	33	43	1	1		35	1	98	54	74	85	97	
reg: R 12602	Bdate: 19950516	55	BIO EPD	-2.6	1.3	8.0	-1.0	7.0	-1.2	2.9	1.1	-0.3	-0.9	-0.7	0.7
tattoo: MVF 80E		5	acc	76	92	71	69	2	50	48	60	60	64	69	68
MVF GRANDEUR 04G		%wb	25	25	8	22		16	1						
reg: R 13248	Bdate: 19970405	30	BIO EPD	-3.2	2.3	18.0	28.0	0.0	-3.0	1.7					
tattoo: MVF 04G		3	acc	68	87	38	35	0	39	33					
MVF SUPER COOL 12F		%wb	21	34	81	93		15	16	83	16	12	50	99	
reg: R 13124	Bdate: 19960103	44	BIO EPD	-3.5	1.8	38.0	68.0	1.0	-3.1	11.0	0.7	-0.4	-1.2	-1.3	0.8
tattoo: MVF 12F		4	acc	72	90	56	57	1	43	35	41	41	45	55	54
NAJ GALANTE 10W		%wb	12	11	31	15		81	82	96		88	76	97	
reg: R 4687	Bdate: 19870403	77	BIO EPD	-4.5	3.5	25.0	24.0	28.0	2.3	20.8	1.0	-0.8	-0.9	0.6	
tattoo: NAJ 10W		27	acc	83	94	86	81	9	72	71	29	53	58	68	
RHEO LADIES MAN 18L		%wb	65	49	99	99		26	22	98	3	1	91	99	
reg: [CAN]D12487	Bdate: 20010220	32	BIO EPD	-0.7	1.0	67.0	110.0	7.0	-1.9	12.0	1.1	-0.5	-1.6	-0.4	0.8
tattoo: RHEO 18L		1	acc	67	88	79	70	3	45	51	57	56	62	66	70
RHEO LANCASTER 113L		%wb	98	96	99	96		38	14	39	67	37	95	96	
reg: [CAN]R16923	Bdate: 20010305	23	BIO EPD	4.1	-3.0	54.0	74.0	1.0	-1.0	10.6	0.3	-0.3	-1.1	-0.2	0.6
tattoo: RHEO 113L		4	acc	60	84	71	66	1	35	36	58	57	63	67	71
RIT EMPIRE 42E		%wb	93	94	22	14		78	27						
reg: R 11396	Bdate: 19950413	21	BIO EPD	2.1	-2.4	23.0	24.0	5.0	1.9	12.8					
tattoo: RIT 42E		1	acc	74	83	71	45	1	51	37					
RIT FRISSON 52F		%wb	92	93	36	63		80	15			50	10	84	
reg: R 12288	Bdate: 19960330	74	BIO EPD	2.0	-2.3	26.0	44.0	30.0	2.1	10.8		-1.0	-2.2	0.1	
tattoo: RIT 52F		2	acc	80	94	84	79	1	58	64		61	72	70	
RIT GUS 66G		%wb	98	98	48	27		87	50			89	61	92	
reg: R 13229	Bdate: 19970422	24	BIO EPD	4.0	-4.0	29.0	30.0	0.0	3.0	15.8		-0.8	-1.2	0.4	
tattoo: RIT 66G		1	acc	61	85	73	61	0	34	18		47	61	58	
ROSENEATH 22W		%wb	90	72	1	37		69	1	96	3	1	64	11	
reg: R 3800	Bdate: 19870401	61	BIO EPD	1.6	-0.3	11.0	34.0	36.0	1.2	3.0	1.0	-0.5	-1.5	-1.1	-0.6
tattoo: APB 22W		4	acc	82	93	87	79	3	75	77	13	12	56	65	64
ROSENEATH AUSTIN WRB 10A		%wb	72	67	71	85		99	97						
reg: R 7671	Bdate: 19910305	48	BIO EPD	-0.2	0.0	34.0	58.0	20.0	7.2	27.4					
tattoo: WRB 10A		6	acc	73	91	48	45	4	58	60					
ROSENEATH BERKELEY 88B		%wb	75	68	23	78		63	86	43	93	89	91	96	
reg: D 5274	Bdate: 19920811	20	BIO EPD	0.0	-0.1	23.0	51.0	20.0	0.7	21.9	0.4	-0.2	-0.8	-0.5	0.6
tattoo: WRB 88B		3	acc	59	83	71	71	5	46	54	44	35	65	72	75
ROSENEATH CELEBRATION 48C		%wb	66	76	54	77		94	98	92		4	95	90	
reg: R 10164	Bdate: 19930321	17	BIO EPD	-0.6	-0.6	30.0	51.0	9.0	4.3	28.3	0.9	-1.3	-0.2	0.3	
tattoo: WRB 48C		1	acc	60	82	65	60	2	47	47	13	15	21	20	

PROVEN sires (> 15 calves sired) (Evaluated 2008-02-08)		Prog Herds	CE	BW	WG	YG	GProg Herds	Mat. CE	Milk	REA	IMF	BFAT	SC	HT
ROSENEATH EMERSON 30E	%wb		53	59	58	85		9	45	99	64	55	88	90
reg: R 12037 Bdate: 19950211	18	BIO EPD	-1.4	0.4	31.0	58.0	0.0	-3.9	15.2	1.2	-0.3	-1.0	-0.6	0.3
tattoo: WRB 30E	1	acc	62	84	68	68	0	46	45	56	31	61	72	69
ROSENEATH JUPITER WRB 59J	%wb		58	37	94	90		27	53	90	1	1	98	97
reg: R 15351 Bdate: 19990409	50	BIO EPD	-1.1	1.6	45.0	63.0	7.0	-1.8	16.2	0.9	-0.5	-1.5	0.8	0.6
tattoo: WRB 59J	2	acc	74	91	84	73	2	48	50	52	52	56	51	61
ROSENEATH WILLIAM 4W	%wb		87	81	64	89		99	99	92	2	1	65	84
reg: R 3791 Bdate: 19870215	173	BIO EPD	1.2	-0.9	32.0	62.0	150.0	7.9	31.9	0.9	-0.5	-1.5	-1.1	0.1
tattoo: APB 4W	31	acc	91	97	93	90	13	86	90	50	28	64	69	72
ROSENEATH ZENITH 1Z	%wb		5	1	33	74		73	77	64		94	56	
reg: R 6629 Bdate: 19900115	71	BIO EPD	-6.1	7.5	26.0	49.0	50.0	1.5	19.8	0.5		-0.7	-1.2	
tattoo: APB 1Z	5	acc	80	94	85	83	4	69	76	42		47	57	
ROUND VALLEY 10B	%wb		84	65	4	18		4	9	16	91	38	7	
reg: D 4921 Bdate: 19920402	88	BIO EPD	0.8	0.1	15.0	26.0	13.0	-5.2	9.2	0.1	-0.2	-1.1	-2.3	
tattoo: FBH 10B	14	acc	82	95	88	86	6	60	57	37	37	41	51	
ROYAL BATMAN 21B	%wb		53	23	99	98		76	98	87	94	63	24	95
reg: R 7898 Bdate: 19920201	62	BIO EPD	-1.4	2.5	56.0	82.0	50.0	1.8	29.5	0.8	-0.2	-1.0	-1.7	0.5
tattoo: SED 21B	5	acc	77	93	87	81	3	67	76	52	52	57	64	65
ROYAL TRADITION TWO 5B	%wb		39	12	48	32		75	89	65	82	49	9	19
reg: R 7895 Bdate: 19920107	58	BIO EPD	-2.2	3.3	29.0	32.0	26.0	1.7	23.0	0.5	-0.2	-1.0	-2.3	-0.4
tattoo: SED 5B	9	acc	79	92	82	71	6	69	67	14	14	16	22	18
RTF ELIJAH 14E	%wb		66	78	16	36		61	46	84	18	61	42	55
reg: R 11134 Bdate: 19950301	27	BIO EPD	-0.6	-0.7	21.0	34.0	7.0	0.6	15.3	0.7	-0.4	-1.0	-1.4	-0.1
tattoo: RTF 14E	2	acc	64	86	76	70	2	46	45	39	39	48	62	59
SANDBROOK VINCENT 440S	%wb		27	23	71	71		8	1	96	47	26	41	88
reg: R 2255 Bdate: 19840314	193	BIO EPD	-3.1	2.5	34.0	47.0	93.0	-4.1	0.1	1.0	-0.3	-1.1	-1.4	0.3
tattoo: GEL 440S	42	acc	92	97	91	89	17	85	85	51	46	83	86	87
SANDGAARDS BLUE JAY 1X	%wb		91	96	5	11		72	62	8	86	78	62	13
reg: R 4362 Bdate: 19880315	241	BIO EPD	1.8	-2.9	16.0	22.0	43.0	1.4	17.4	0.0	-0.2	-0.9	-1.2	-0.6
tattoo: PMS 1X	60	acc	92	98	95	85	13	77	78	49	45	58	58	67
SANDY TOWN METHUSELAH 1M	%wb		8	7	99	99		57	59	98	24	60	92	84
reg: [CAN]D13207 Bdate: 20020122	102	BIO EPD	-5.2	4.0	56.0	89.0	11.0	0.3	17.0	1.1	-0.3	-1.0	-0.4	0.1
tattoo: STC 1M	1	acc	83	95	92	79	1	48	55	61	61	66	76	74
SHOWCASE CURIOUS GEORGE 321E	%wb		72	65	11	17		44	31			77	88	75
reg: D 8149 Bdate: 19950321	29	BIO EPD	-0.2	0.1	19.0	25.0	15.0	-0.5	13.5			-0.9	-0.6	0.0
tattoo: CDAO 321E	1	acc	62	85	45	38	1	46	49			14	19	18
SJF Potsy 9P	%wb		69	68	49	44		68	5					
reg: Bdate: 20040412	16	BIO EPD	-0.4	-0.1	29.0	36.0	0.0	1.1	7.9					
tattoo: SJF 9P	1	acc	53	79	66	47	0	37	37					
SPITZEE PAPIILLON 2P	%wb		4	15	27	32		2	19			60	38	30
reg: R 1569 Bdate: 19820504	31	BIO EPD	-6.4	3.1	24.0	32.0	9.0	-6.7	11.6			-1.0	-1.4	-0.2
tattoo: KAW 2P	6	acc	61	85	24	28	4	52	40			22	30	28
SPRUCE VIEW HERBIE SV 3H	%wb		98	98	21	5		97	6	71	91	47	13	22
reg: R 14540 Bdate: 19980509	65	BIO EPD	3.8	-4.4	23.0	15.0	16.0	5.1	8.2	0.6	-0.2	-1.0	-2.0	-0.3
tattoo: SV 3H	3	acc	77	92	85	81	2	58	61	31	31	60	69	68
SUNDANCE DICK TRACY 38D	%wb		61	73	3	9		97	98					
reg: D 6739 Bdate: 19940314	46	BIO EPD	-0.9	-0.4	14.0	20.0	6.0	5.4	29.2					
tattoo: SVR 38D	2	acc	73	90	78	74	3	50	43					
SUNDANCE LONDON 28L	%wb		51	25	67	64		40	92	42	68	50	36	32
reg: [CAN]D12568 Bdate: 20010304	67	BIO EPD	-1.5	2.3	33.0	44.0	6.0	-0.8	24.1	0.4	-0.3	-1.0	-1.5	-0.2
tattoo: SVR 28L	1	acc	76	93	87	57	1	41	35	10	10	12	17	16
SUNDANCE MICRO 44M	%wb		88	93	19	22		75	53					
reg: [CAN]D13287 Bdate: 20020410	26	BIO EPD	1.3	-2.2	22.0	28.0	0.0	1.7	16.3					
tattoo: SVR 44M	1	acc	57	80	15	13	0	25	11					
SUNDANCE ZEPHYR 43Z	%wb		46	61	5	14		60	98	90	79	87	70	64
reg: R 6050 Bdate: 19900314	91	BIO EPD	-1.8	0.3	16.0	24.0	17.0	0.5	28.9	0.9	-0.3	-0.8	-1.0	-0.1
tattoo: SVR 43Z	30	acc	85	95	81	74	11	69	64	37	31	45	45	54

PROVEN sires (> 15 calves sired)		Prog				GProg				Mat.				
(Evaluated 2008-02-08)		Herds	CE	BW	WG	YG	Herds	CE	Milk	REA	IMF	BFAT	SC	HT
T-4 HIRIAM 22H		%wb	11	18	30	26		49	7					
reg: D 11433	Bdate: 19980405	27	BIO EPD	-4.6	2.8	25.0	30.0	3.0	-0.2	8.4				
tattoo: WWP 22H		1	acc	62	86	76	50	1	38	31				
T4 HARLEY 16H		%wb	10	1	1	4		53	52					
reg: R 14963	Bdate: 19980401	25	BIO EPD	-4.8	6.1	10.0	13.0	0.0	0.0	16.1				
tattoo: WWP 16H		2	acc	61	85	74	50	0	34	19				
TOP NATURS TOPPER 011C		%wb	87	87	13	14		29	13	14	86	98	91	66
reg: D 7780	Bdate: 19930410	352	BIO EPD	1.2	-1.5	20.0	24.0	63.0	-1.7	10.4	0.1	-0.2	-0.6	-0.4
tattoo: TOP 011C		91	acc	94	98	97	88	16	75	79	45	45	53	56
TRIPL C ISAAC 28W		%wb	1	1	18	20		35	13			98	17	89
reg: R 3881	Bdate: 19870317	42	BIO EPD	-9.1	7.1	22.0	27.0	12.0	-1.2	10.4		-0.6	-1.9	0.3
tattoo: JC 28W		5	acc	76	90	76	74	3	69	64		62	70	69
TRIPLE C CHANCELLOR 70U		%wb	76	56	23	47		30	49	43	21	21	12	78
reg: R 3424	Bdate: 19860407	146	BIO EPD	0.2	0.6	23.0	38.0	54.0	-1.6	15.7	0.4	-0.4	-1.2	-2.1
tattoo: JC 70U		29	acc	89	96	80	78	13	83	78	25	24	56	64
TRIPLE C CRAFTSMAN 575H		%wb	66	76	92	78		30	35					
reg: D 9997	Bdate: 19980324	23	BIO EPD	-0.6	-0.6	43.0	51.0	1.0	-1.6	14.0				
tattoo: JC 575H		3	acc	62	85	42	34	1	37	27				
TRIPLE C EVADER 57R		%wb	94	55	33	16		2	1			21	50	25
reg: R 2065	Bdate: 19830301	95	BIO EPD	2.5	0.7	26.0	24.0	72.0	-6.2	0.8		-1.2	-1.3	-0.3
tattoo: JC 57R		8	acc	83	94	83	78	15	79	81		16	21	21
TRIPLE C HERCULES 296F		%wb	56	65	88	88		5	28					
reg: D 9324	Bdate: 19960402	53	BIO EPD	-1.2	0.1	41.0	61.0	25.0	-4.7	13.1				
tattoo: JC 296F		2	acc	75	91	56	55	4	60	60				
TRIPLE C INVICTUS 292A		%wb	11	35	63	66		10	25	63	60	43	22	
reg: R 6714	Bdate: 19910125	119	BIO EPD	-4.6	1.7	32.0	45.0	20.0	-3.7	12.6	0.5	-0.3	-1.1	-1.7
tattoo: JC 292A		14	acc	86	96	76	67	7	65	59	27	27	31	40
TRIPLE C POUNDMAKER 392B		%wb	63	39	4	4		7	1					
reg: D 4640	Bdate: 19920126	34	BIO EPD	-0.8	1.5	15.0	13.0	7.0	-4.2	1.8				
tattoo: JC 392B		2	acc	69	88	69	49	3	56	51				
VAN ALTA HANK 29E		%wb	40	41	71	70		69	31					
reg: R 11896	Bdate: 19950413	29	BIO EPD	-2.1	1.4	34.0	47.0	2.0	1.2	13.5				
tattoo: PVT 29E		1	acc	64	87	25	24	2	39	32				
VAN ALTA LES 7A		%wb	60	65	13	20		54	4					
reg: R 7034	Bdate: 19910217	18	BIO EPD	-1.0	0.1	20.0	27.0	3.0	0.1	7.4				
tattoo: PVT 7A		1	acc	59	83	26	23	1	46	29				
VAN ALTA LONESTAR 32F		%wb	3	1	59	77		1	1					
reg: R 12969	Bdate: 19960430	21	BIO EPD	-7.0	6.4	31.0	51.0	0.0	-8.1	0.4				
tattoo: PVT 32F		2	acc	60	83	28	27	0	36	21				
VAN ALTA LUCKY BOY PVT 167S		%wb	19	58	75	70		4	1			91	20	85
reg: R 2252	Bdate: 19840401	71	BIO EPD	-3.6	0.5	36.0	47.0	25.0	-5.0	-3.4		-0.8	-1.8	0.2
tattoo: PVT 167S		13	acc	81	93	67	58	7	75	63		15	20	19
VAN ALTA MAVERICK 1D		%wb	2	1	52	78		1	1					
reg: R 11053	Bdate: 19940117	40	BIO EPD	-7.6	6.4	30.0	52.0	12.0	-11.5	-3.6				
tattoo: PVT 1D		7	acc	79	90	81	79	3	63	56				
VAN ALTA ROYCE 20Z		%wb	33	39	33	22		51	1					
reg: D 3145	Bdate: 19900323	63	BIO EPD	-2.6	1.5	26.0	28.0	44.0	-0.1	0.8				
tattoo: PVT 20Z		10	acc	79	93	58	52	8	70	67				
VAUPRÉ NIKE 3N TWIN		%wb	25	30	16	21		68	32					
reg: [CAN]R16944	Bdate: 20030417	15	BIO EPD	-3.2	2.0	21.0	27.0	0.0	1.1	13.6				
tattoo: VAUP 3N		1	acc	50	80	59	41	0	25	17				
VOB OK NORTHERN JUSTIN		%wb	5	7	76	90		3	98	96	85	40	97	62
reg: R 1146	Bdate: 19800125	144	BIO EPD	-6.0	4.0	36.0	64.0	143.0	-5.4	29.7	1.0	-0.2	-1.1	0.0
tattoo: VOB 1M		25	acc	90	97	90	86	20	88	89	19	16	55	63
VOY SHERIF 1S		%wb	81	79	41	35		68	30			94	2	23
reg: R 2428	Bdate: 19840330	101	BIO EPD	0.6	-0.8	28.0	33.0	87.0	1.1	13.4		-0.7	-2.8	-0.3
tattoo: VOY 1S		17	acc	83	95	79	68	10	79	81		35	45	43

PROVEN sires (> 15 calves sired) (Evaluated 2008-02-08)		Prog Herds	CE	BW	WG	YG	GProg Herds	Mat. CE	Milk	REA	IMF	BFAT	SC	HT
WEST WINDS EASY RIDER 12E	%wb		15	55	1	4		53	39					
reg: R 11363 Bdate: 19950114	BIO EPD	22	-4.1	0.7	9.0	12.0	22.0	0.0	14.6					
tattoo: SMB 12E	acc	2	58	84	63	60	3	49	57					
WEST WINDS HERDSMAN 32H	%wb		42	51	89	44		95	45	79	69	38	89	
reg: R 14287 Bdate: 19980101	BIO EPD	102	-2.0	0.9	41.0	36.0	49.0	4.6	15.2	0.7	-0.3	-1.1	-0.6	
tattoo: NOR 32H	acc	9	85	95	91	89	2	71	77	52	52	57	55	
WEST WINDS JANUS 8J	%wb		73	84	60	81		94	91					
reg: D 10927 Bdate: 19990413	BIO EPD	19	-0.1	-1.1	31.0	54.0	7.0	4.2	23.4					
tattoo: WW 8J	acc	4	56	83	69	65	2	37	42					
WEST WINDS JIGSAW 13J	%wb		99	97	11	5		87	53					
reg: R 14745 Bdate: 19990324	BIO EPD	28	4.8	-3.4	20.0	14.0	0.0	2.9	16.3					
tattoo: SMB 13J	acc	4	61	86	65	52	0	37	13					
WEST WINDS MINUTEMAN 44M	%wb		30	75	67	27		93	67	49	74	95	25	
reg: [CAN]R16521 Bdate: 20020105	BIO EPD	46	-2.8	-0.5	33.0	30.0	9.0	4.1	18.2	0.4	-0.3	-0.7	-1.7	
tattoo: NOR 44M	acc	3	73	91	86	82	1	48	55	63	63	68	65	
WEST WINDS PEPPER 31P	%wb		96	90	98	88		99	96					
reg: Bdate: 20040506	BIO EPD	25	2.8	-1.8	50.0	61.0	0.0	8.7	26.3					
tattoo: SMB 31P	acc	1	62	85	76	58	0	32	30					
WEST WINDS PHOENIX 25P	%wb		22	47	84	21		80	61	48	5	6	28	14
reg: Bdate: 20040202	BIO EPD	42	-3.4	1.1	39.0	28.0	0.0	2.1	17.2	0.4	-0.4	-1.3	-1.6	-0.5
tattoo: SMB 25P	acc	1	71	90	81	68	0	39	36	41	41	45	55	53
WILLOW CREEK COMMANDER 26C	%wb		36	55	42	42		99	99	51	83	76	91	99
reg: D 5942 Bdate: 19930206	BIO EPD	134	-2.4	0.7	28.0	36.0	16.0	7.1	46.6	0.4	-0.2	-0.9	-0.4	0.8
tattoo: DKA 26C	acc	9	87	96	91	74	3	63	60	41	41	49	59	49
WIW MISTER CORBY 1R	%wb		48	34	84	90		25	61	99	5	35	19	99
reg: R 4575 Bdate: 19830503	BIO EPD	294	-1.7	1.8	39.0	63.0	118.0	-2.0	17.2	1.2	-0.4	-1.1	-1.8	0.9
tattoo: WIW 1R	acc	31	94	98	96	95	11	87	88	85	79	94	95	96
WSS MIGHTY DIO 43M	%wb		89	95	16	3		96	73	91	23	87	59	29
reg: R 1166 Bdate: 19800401	BIO EPD	242	1.4	-2.8	21.0	11.0	139.0	5.0	19.2	0.9	-0.3	-0.8	-1.2	-0.2
tattoo: DIO 43M	acc	50	95	98	94	93	38	93	92	25	11	82	86	86
WSS REX 6R	%wb		40	14	1	9		81	55	90	8	8	97	84
reg: R 1921 Bdate: 19830328	BIO EPD	85	-2.1	3.2	10.0	20.0	60.0	2.2	16.5	0.9	-0.4	-1.3	0.0	0.1
tattoo: HAR 6R	acc	16	86	95	88	82	13	82	84	15	12	36	45	43
ZAR SIR ALARIC 54A	%wb		40	7	62	65		74	95					
reg: R 7780 Bdate: 19910402	BIO EPD	27	-2.1	4.0	32.0	44.0	21.0	1.6	25.5					
tattoo: ZAR 54A	acc	1	63	86	65	52	4	55	61					
ZAR SIR BARCLAY 60B	%wb		21	32	34	37		63	52					
reg: D 5083 Bdate: 19920326	BIO EPD	36	-3.5	1.9	26.0	34.0	18.0	0.7	16.1					
tattoo: ZAR 60B	acc	2	71	88	71	63	6	61	60					
ZAR SIR WALDO 2W	%wb		1	2	2	13		1	1					
reg: D 1022 Bdate: 19870217	BIO EPD	28	-8.4	5.5	12.0	22.0	17.0	-9.2	5.1					
tattoo: ZAR 2W	acc	3	63	84	63	49	4	54	61					
ZAR SIR ZEUS 13Z	%wb		61	68	42	58		1	1	18	65	44	90	78
reg: D 3387 Bdate: 19900222	BIO EPD	137	-0.9	-0.1	28.0	42.0	39.0	-7.8	3.1	0.1	-0.3	-1.1	-0.5	0.0
tattoo: ZAR 13Z	acc	32	89	96	90	86	7	77	76	20	12	30	39	37
ZAR SIR ZORRO 47Z	%wb		34	59	87	75		5	68					
reg: R 6325 Bdate: 19900326	BIO EPD	142	-2.5	0.4	40.0	50.0	20.0	-4.7	18.3					
tattoo: ZAR 47Z	acc	11	87	96	89	83	7	68	63					
ZC KIMO 17M	%wb		89	81	92	44		72	75	14	26	18	1	2
reg: [CAN]R16807 Bdate: 20020607	BIO EPD	19	1.4	-0.9	43.0	37.0	0.0	1.4	19.5	0.1	-0.3	-1.2	-3.4	-1.1
tattoo: ZC 17M	acc	1	56	82	62	51	0	31	26	31	31	35	45	43

Prog - # of progeny

Herds - # of herds sire used in

% wb - Percentile ranking within breed

- values range from 1 to 99

- higher values are desirable

BIO EPD - BIO's Genetic Evaluation

CE - Calving Ease

BW - Birth Weight

WG - Weaning Gain

YG - Yearling Gain

Gprog - # of Grand Progeny

Herds - # of Herds

Mat. CE - Maternal Calving Ease

Milk - Pounds of increased calf at weaning time due to milk production

REA - Rib-eye area

IMF - Marbling

BFAT - Backfat at the 12/13th rib site, Measured with ultrasound

SC - Scrotal circumference; HT - Height at the hips



**Ilse Vink - Secretary
Ontario Blonde
d'Aquitaine Association**



2007 was another busy year for the Ontario Blonde d'Aquitaine Association (OBdAA) and its members!

- Blonde information booths were set up at various trade shows in the province, including the International Plowing Match in Frankville and the Hastings County Plowing Match at Frankford
- The first day of the show at Frankford drew 10,000 visitors.
- We made our first appearance at the Peterborough Farm Show. A volunteer reported it was a good show, with a strong visitor turnout, and recommended we participate in future shows.

“The Ontario Blonde d'Aquitaine Association thanks all the volunteers for their dedication in promoting Blondes! The OBdAA and its members continue to promote the breed at shows, sales, bull test stations and related industry functions. Our juniors are also active promoting Blondes through 4-H projects in Ontario.”

For several years one of our main fund raising events has been the sale of raffle tickets for a fancy bred heifer or cash equivalent. This continues to draw many visitors to the Blonde booth at venues. The winning ticket is drawn at the annual Cream of the Crop Sale held in October. In 2007 Dwayne Acres, one of our members from Osgoode was the winner and chose the fancy bred heifer. Anyone interested in purchasing tickets can contact the association or a board member.

The 7th Annual Cream of the Crop Sale held in the fall at Hoards Station was again a successful event for the provincial association. Seventeen consignors offered 70 lots with a sale average of \$1,780. Buyers were pleased with the excellent quality and variety of animals that went through the ring.

The week following the Cream of

the Crop Sale, an OBdAA organized Blonde-influence stocker sale was held at Hoards Station. Calves sold were age-verified and vaccinated. Although prices were disappointing due to a sudden drop in the stocker market the week previous, subsequent prices at regular sales showed our stocker sale did rather well in comparison.

As on our provincial website we emphasize the breed's high daily gain as one of its outstanding features. As well the growth rate of Blonde d'Aquitaine cattle matches or often surpasses that of other high growth rate breeds. Most importantly too, high dressing ratios and the quality of meat means Blonde cattle crosses command premium prices at slaughter.

Ilse Vink
Secretary - OBdAA

– ROSS DIX MEMORIAL BURSARY –

We are happy to announce the establishment of a bursary in memory of Ross Dix donated by his son, John Dix, of Markdale, Ontario.

Throughout his lifetime, Ross Dix was known for his quiet willingness and helpful nature, exemplified wherever he went, or through whatever he did. He was continuously supportive of the Blonde breed and the Association. This bursary will continue his legacy.

BURSARY VALUE:

An amount of \$500 will be divided among qualified applicants.

ELIGIBILITY:

- **Only children of active members of the Ontario Blonde d'Aquitaine Association are eligible to apply.**
- **Applicants must be actively involved in an agricultural course or program at the College or University level.**

Applications should be sent in to the Ontario Blonde d'Aquitaine Association by **September 30, 2008:**

Ontario Blonde d'Aquitaine Association - c/o Ilse Vink, secretary
40 Gazley Rd., RR #1, Wooler, ON K0K 3M0

FORTY ACRE BLONDES

Proudly Presents Our
Main Herd Sire... **FORTY ACRE ROCCO 5R (P)**

YEARLING BULLS FOR SALE
Fertile • Easy Keepers • Quiet
WE ALWAYS WELCOME VISITORS OR PHONE CALLS!

Don Mehler or Pat Filz
Box 418, Lampman, SK S0C 1N0
Ph: 306-634-2174 Cell: 306-421-6987
Email: fortyacreblondes@sasktel.net

**CANADIAN FARM BUSINESS
MANAGEMENT COUNCIL
AGRIWEBINAR SERIES**

The Canadian Farm Business Management Council continues to offer its Agriwebinar series. **All sessions are free.** In order to view the webinars you must register, but only once for all of them. For more information and to register go to:

<http://www.agriwebinar.com/>

Hilltop Orchard Farm

Blonde d'Aquitaine Seedstock - Est. 1986

Home of the reigning '06-07 National Grand Champion Bull

Reserve Champion Bull • Grand Champion Female • 1st place heifer calf
 & Polled Fullblood herdsire Norlock Nick – the *backfat King!* • Private treaty sales
 year round • A quality selection of herd sires, females, embryos & semen
 Easy-keeping – Hay fed – *the working kind – for the working class!*



Complete Sales Management

Blonde d'Aquitaine Sales our Specialty – Where satisfied Customers consign
 Order buying • Ring Service • Commission Sales • Photography by Ashley
Consider us for your next sale or sale consignments – production or dispersal

Dave & Sheila McNevean & Family • 4426 County Road # 2, RR # 3 Hastings
 Ontario K0L 1Y0 • (705) 295-6208 • email: mcnevean@nexicom.net

Premises Identification.

The Canadian Cattle Identification Agency is encouraging every producer to obtain a Premises Identification (Premises ID) number by reporting the legal land description of their home quarter or operation in the CCIA database. Premises ID will provide the CCIA and/or CFIA with specific location information if any animal health or food safety issues should ever arise.

To submit your Premises ID information call CCIA by phone at 1-877-909-2333 or contact your local Mobile Field Representative.



www.canadaid.ca ~ 1-877-909-BEEF

BLUE DIAMOND BLONDES



- ✦ Repeat winner of the high-gaining Blonde Bull award at the Test Station at Douglas, Manitoba (five times in the past seven seasons).
- ✦ Inaugural winner of Man-Sask's Best All-Around Blonde Bull award in April 2007 reflecting excellence in both weight gain and carcass quality.
- ✦ Only 10% of our male calves are kept for our own use and for sale as herd sires. *Call early!*

Dave Gerega
Box 1379, Roblin MB R0L 1P0
E-mail: dger@mts.net
Phone: (204) 937-3426

DOVECOTE BLONDES
CUSTOM MEAT ORDERS
SEED STOCK
BLONDE D'AQUITAINE

DOVECOTE BLONDES

John and Debbie Plas

2254 Jerseyville Road
R.R. #1, Jerseyville, ON L0R 1R0

905.648.5437
dplas@sympatico.ca

Thanks to Arsha Blondes and Peter Leger for purchasing our bulls at the "Cream of the Crop" Sales!

BUTTERNUT BLONDES



BUTTERNUT JINGLES

Butternut Blondes

• POLLED GENETICS •

Murphy & Judy Baker
Sunderland, Ontario

Phone/Fax: (905) 985-0563
Email: bakerblondes@sympatico.ca



**Hugh Lynch-Staunton -
CCA President**

CANADIAN CATTLEMEN'S ASSOCIATION STATE OF THE INDUSTRY

By Hugh Lynch-Staunton, CCA President

It would be an understatement to say that 2007 was both an interesting and eventful year. Hopefully 2008 will not have the continuous ups and downs that we saw last year and the Canadian beef cattle industry can return to somewhat normal operations.

The industry was faced with several major issues last year ranging from a financial blow as a result of the high Canadian dollar, increased regulatory requirements, and the high cost of feed, to various state requirements that challenged trade with the United States.

Regulatory requirements in Canada such as the enhanced feed ban have placed pressure on the industry as well. On July 12, the enhanced feed ban, which requires that specified risk materials (SRMs) not be used as an ingredient or input in animal feed, pet food or fertilizer and must be segregated, destroyed or permanently contained. Although the CCA supports the enhanced feed ban's goal to more quickly eradicate BSE in Canada and secure Canada's status as a controlled risk country under the World Organization for Animal Health (OIE), its implementation has resulted in added costs to all sectors of the industry relative to its competitors. The CCA continues to stress to the government the importance and need for financial support throughout this initiative.

Recognizing the financial crisis facing the industry, the CCA board and staff worked throughout November and December to find ways to assist producers in the short-term while determining the industry's long-term strategy. In particular, the CCA's goal was and continues to be to get funds to producers quickly and to address the current business risk management (BRM) programs so that they are more accessible to producers. The CCA is recommending that any assistance plan be national in scope and be equally accessible to producers across Canada; that programs not be ad hoc in nature and provide both short- and long-term benefits to producers; that they address the needs of all sectors of the cattle industry, regardless of size and structure; and that any programs be designed to minimize the risk of countervail actions by other countries. For more information on the CCA's recommendations to government visit the CCA website at www.cattle.ca and click on "What's New".

A piece of long-awaited good news came on November 19, when the United States Department of Agriculture (USDA)'s "Rule 2" came into effect, allowing for the export of any cattle – for breeding or for slaughter – born on or after March 1, 1999, and beef products of any age into the United States. In addition, on November 26, the Ranchers-Cattlemen Action Legal Fund (R-CALF)'s deadline to file for an appeal to the U.S. Supreme Court regarding Rule 1 passed. This means that R-CALF can no longer get a permanent injunction against the rule to allow cattle under-30-months of age to enter into the United States.

On behalf of the CCA board and staff, I want to extend our appreciation for the input and support of all producers and breed associations in Canada. I hope 2008 brings you prosperity and a healthy Canadian beef cattle industry.

Hugh Lynch-Staunton
CCA President

**Remember -
the 2008 Tattoo Letter is**

U

UK FOOT-AND-MOUTH DISEASE FREE

The World Animal Health Organisation (OIE) has granted the UK foot-and-mouth disease (FMD) free status. The UK has regained freedom from FMD without vaccination, following a three month disease free period. No cases of FMD have emerged since September 30, 2007.

The disease free status is the next step to the UK being able to export to countries outside of the EU after intra EU trade recommenced on December 31, 2007.



"THE HOME OF CUSTOMER SERVICE"

- Complete In-House and On-Farm Services
- Accredited Export Center
- Donor & Recipient Facilities & Management
- Recipient Herd

Toll Free: 1.877.686.8202

253147 Unit A, Bears paw Rd
Calgary, AB T3L 2P5

Ph: 403.239.8882

Fax: 403.239.8886

Email: aeg@altagenetics.com

Website: www.aeg.ca

Find out and
enjoy what thousands
of other Alberta beef
producers know.

Subscribe to
**ALBERTA BEEF
MAGAZINE**
and receive information
about your industry in
your back yard.

Alberta
BEEF MAGAZINE

Call **1-800-387-2333**
or email
beefmag@telusplanet.net

Producers Finding Age Verification Simplified

by Brooke Hunter



Brooke Hunter

As the Canadian Cattle Identification Agency (CCIA) moves into its 10th year as an industry initiated and industry led traceability program, value added initiatives are beginning to play a more important role. Producers are being encouraged to register their legal land description to create a unique

premises identification number and age verify their animals as further steps towards the efficient containment and eradication of animal disease and meeting market access demands. Additional services, including move-in and move-out functions, are slowly being recognized by producers as valuable steps towards full animal movement tracking.

With any new initiative comes growing pains, and nowhere is this more evident than in the area of Age Verification. Nanita Blomquist, a CCIA Mobile Field Representative in Alberta, believes that the biggest problem is the misconceptions surrounding CLTS use.

"It's not as difficult as people think, it really is a quick process and there are lots of resources available to help." One such resource is the staff at the CCIA's call centre that will walk producers and industry partners through age verification. By calling 1-877-909-BEEF, you will be put in touch with a customer service representative who will help you through the process and give you some tips for future database activity.

Jackie Dann, who works with Alert Agri Distributors in Manitoba, has seen first hand how the CCIA staff can make the process of age verification a matter of minutes. "There was a mix up with the age verified cattle and a CCIA customer service representative, was able to help us go back through and verify those cat-

"... short term pain for a long term gain."

tle and get them to sale. She was absolutely awesome. Age verification is a huge benefit for us and my customers."

Not all producers are currently participating in age verification of cattle, but as of January 14th, 2008 more than 2.24 million birth-dates of active animals under 30 months were recorded in the CLTS database.

"As a producer myself, I see the long-term benefits of age verification," says Blomquist. "The biggest challenge is that often producers don't see the return on the time and work they put into verifying their calves, but I see more buyers bidding on my calves because they are age verified and I see more export markets open to them."

Dann agrees. "For one thing it is good for the industry. The system works. If we verify the cattle and put in their dates, when we have problems we now have a method by which to track it, and it works."

Along with a growing interest in age verified calves from external markets and the cost saving benefit from no longer needing to use dentition, there are significant savings gained by identifying cattle under and over 30 months for required SRM removal procedures. The biggest benefit to age verification, and other value-added initiatives, however, continues to be the integrity that the Canadian Cattle Industry has gained. Known as a world leader in radio identification and animal tracking, cattle industries throughout the globe now look to the CCIA as a guideline to industry standards as age verified cattle become increasingly in demand by foreign markets.

"We all have to do our part to ensure the integrity of the system," says Dann. "You may not think it's worth the time today but when you are marketing your cattle, and if you're selling age verified cattle, you are going to see the advantage. It is a short term pain for a long term gain."

Brooke Hunter is the communications co-coordinator at the CCIA, Calgary, Alta. Contact her at brooke@canadaid.ca



CHANGES TO CATTLE TRUCKING LAWS

The Canadian Food Inspection Agency (CFIA) is currently assessing how cattle are transported in Canada with intentions of changing the laws and regulations that govern the industry. Changes proposed by CFIA may increase trucking costs for beef producers. In an effort to better understand current transportation conditions for the movement of cattle in Canada, the Ontario Cattlemen's Association is funding a University of Guelph research study to examine how current transportation conditions (space/loading densities and travel time) impact animal welfare, health, and performance for weaned calves and yearlings (500-900 lbs). The objectives of this research are to determine if current procedures for transporting cattle ensure animal welfare and how they impact health and performance after arrival.

More information can be obtained from one of the University of Guelph researchers involved in this study by telephone or e-mail:

- Matt Thrower 519-827-1346, mthrower@uoguelph.ca
- Ken Bateman 519-824-4120, ext. 5-4006, zkbateman@ovc.uoguelph.ca
- Ira Mandell 519-824-4120, ext. 5-3337, imandell@uoguelph.ca
- Tina Widowski 519-824-4120, ext. 5-2408, twidowsk@uoguelph.ca

GIVE YOUR BLONDES A TREAT!

<p>HERBALT CBAA #16 BW: 114 lbs. Mat. Wt: 2400 lbs.</p>  <p>ETRVIN DARLING-UTITION TRINQUEVILLE</p> <p>ERINETTE AMERICANO BABINETTE</p> <p>Well muscled with good legs, HERBALT's gain performance while in quarantine of 3.07 lbs/day suggests that he will compete well with other bulls. His daughters show excellent character, growth, size and feet.</p>	<p>HAMONIEUX CBAA #15 BW: 85 lbs. Mat. Wt: 2450 lbs.</p>  <p>ELDO TORINO VATLANDA</p> <p>ANTALIA KAPUCIN GATIA</p> <p>Sound, correct, well balanced, and offering good growth potential with moderate frame, HARMONIEUX is a well balanced bull whose daughters are showing excellent udders, teats, length of body and mothering ability.</p>
---	--

SEMEN AVAILABLE:

Harmonieux R15
Eivernal Juggler R857
Gangbuster R31
Herbalt R16

DRAYTON VALLEY BLONDES
(Division of Mackenzie Agricultural Enterprises D.V. Ltd)
401, 4900 - 54 Ave.
Drayton Valley, AB T7A 1V8
Ph: 780-542-2268
Cell: 780-621-6219
Fax: 780-542-7388



Clémence Landry - President
Quebec Blonde Association

Mot de la Présidente

Bonjour Ami(e)s éleveurs.

En ce début d'année 2008, je tiens à vous souhaiter mes meilleurs voeux pour l'année en espérant que les projets qui vous tiennent à coeur se réalisent.

Bien que nous vivons des moments difficiles dans le monde agricole, je suis persuadée que tous ensemble nous pouvons continuer à développer les intérêts pour notre belle race qu'est la Blonde d'Aquitaine.

En terminant, je vous souhaite plein de petits veaux neufs en santé.

Amicalement
Clémence Landry, présidente

Letter from our president

Hello fellow breeders,

I would like to wish you all the best for 2008, hoping that all your wishes come true.

Realising that the farming world is going through difficult times, I am certain that we can continue to develop, together, this great breed of Blonde d'Aquitaine.

In closing, I hope you will succeed in breeding lots of healthy little calves.

Yours truly,
Clémence Landry, president

ASSEMBLÉES GÉNÉRALES ANNUELLES (Quebec)

Les assemblées générales annuelles se tiennent à la fin de février ou au début de mars à chaque année. Tous les membres en règle sont les bienvenus à cette importante rencontre.

ANNUAL GENERAL MEETING (Quebec)

Our annual general meeting is usually held at the end of February or beginning of March of every year. All members who have paid their annual fees can participate in this important reunion.



Ahhhh.... the life of a Blonde!!

AM LTD **OLDS AUCTION MART**
Sales Tuesdays & Fridays
Ph: 403-556-3655 Fax: 556-2688
www.oldsauction.com
www.rosehillauction.com

AS **Rosehill Auction Service Ltd**
Licensed Real Estate Agent
DANNY ROSEHILL RES: 556-6668
4613 - 54 St., Olds, Alberta T4H 1E9

Coyote Lake Cattle Co.
Eric & Sid Leavitt • Ph: 403.653.2450
sid@coyotepub.com • www.coyotepub.com
Proud to be involved in the production of the "Blonde Connection" 2008!!
Box 1797, Cardston, AB TOK 0K0

Internet marketing solutions for the Livestock Industry
Box 330, Rochester, AB T0G 1Z0
wlex.ca
Western LIVESTOCK EXCHANGE
UNABLE TO ATTEND THE SALE?
With wlex.ca you can WATCH, LISTEN & BID just like you were there with Online Bidding over the Internet!
Western Livestock Exchange
Mark Shologan • 780.699.5082
info@wlex.ca • wlex.ca

Fantin AgMarketing Inc.
Gloria Fantin
Independently Offering:
✓ Advertising Services for Beef Producers
✓ Advertising & Publication Consulting
✓ Advertising Sales Representation
✓ Writing Services & Distribution
Gloria Fantin
Ph: 403.289.3836
fantinagmarketing@gmail.com
or
fanting@telus.net
www.fantinagmarketing.ca

Advertiser Index - A heartfelt "THANK YOU" to our advertisers!!

Alberta Beef Magazine.....33	Forty Acre Blondes.....30
Alta Embryo Group.....33	High Rock Farms.....15
American Blonde d'Aquitaine Assoc. ..4	Hilltop Orchard Farm.....31
Arsha Blondes.....3	KAM Blondes.....15
Bellevue Blondes.....15	Knobby Oak Farm.....15
Blonde Lady Farm.....15	Knox Innovations Inc.6
Blue Diamond Blondes.....32	MacKenzie's Agricultural Enterprizes..34
Brileen Hill Farms.....18	McIntyre Blondes.....15
Butternut Blondes.....32	Olds Auction Mart Ltd.....35
Canadian Cattle Identification Agency ..31	Pine Coulee Blondes.....15
Complete Sales Management.....31	Pine Ridge Farm.....15
Coyote Lake Cattle Co.....35	Shambani Blondes.....15
Crystal Farms.....IBC	Spruce Vale Blondes.....15
DJ Farms.....5	SRC.....5
D.R.M Farms.....15	Triple K Blondes.....15
Dovecote Blondes.....32	Van Bakel Blondes.....OBC
Drayton Valley Blondes.....34	Western Livestock Exchange.....35
Fantin AgMarketing Inc.....35	Westlane Farms.....6
Ferme Super C.....15	West Wind Blondes.....IFC

Canadian Blonde d'Aquitaine Association

c/o Cdn. Livestock Records Corporation,
2417 Holly Lane, Ottawa, ON K1V 0M7

- **Phone: (613)731-7110**
- Fax: (613)731-0704
- E-Mail cbda@clrc.ca
- www.canadianblondeassociation.ca

– Board Of Directors –

President - Myrna Flesch

Box 334, Stavely, AB T0L 1Z0
Ph: (403)549-2371 Fax: (403)549-2374
Email: westwind@telusplanet.net

Vice-President - Ian Kruis

RR 1, 6325 Enfield Road,
Hampton, ON L0B 1J0
Ph: (905)263-2930 Fax: (905)263-2934
Email: farmerkruis@knoxpumpkinfarm.com

Secretary - Murphy Baker

1050 - 14th Line, RR 5
Sunderland, ON L0C 1H0
Ph: (905)985-0563
Email: bakerblondes@sympatico.ca

Treasurer - Marcel Lachance

3558 Highway 7, RR 3
Norwood, ON K0L 2V0
Ph: (705)639-2183
Email: marcel_lachance@sympatico.ca

Past-President - Dave McNeven

4426 County Rd #2, RR 3
Hastings, ON K0L 1Y0
Ph/Fax: (705)295-6208
Email: mcnevan@nexicom.net

Executive Member - Ron MacArthur

735 Salisbury Road
Moncton, NB E1E 1C4
Ph: (506)382-6630
Email: rmacarthur@rogers.com

Ken MacKenzie

7401, 4900 - 54 Ave
Drayton Valley, AB T7A 1V8
Ph: (780)542-2268
Fax: (780)542-7388
Email: kenkb@telus.net

John Plas

2254 Jerseyville Rd W, RR 1
Jerseyville, ON L0R 1R0
Ph: (905)648-5437
Email: dplas@sympatico.ca

Show & Sale - John Vink

40 Gazley Road, RR 1
Wooler, ON K0K 3M0
Ph: (613)397-1890
Fax: (613)397-1890
Email: jiv@reach.net

What Is Your Print Advertising Doing For You?

By Alana Lunn

Advertising and marketing are two areas that often get overlooked by cattle producers, but they can have a significant effect on profitability of the operation. It is important to develop a reputation for good quality cattle, and advertising and promotion are a good way to build your reputation. Breeders who take the approach that they do not need to advertise will soon find themselves struggling to create brand recognition and awareness of their quality-breeding program. And a quality product is something worth advertising!

There are several different perceptions of "quality". Ultimately a commitment to quality is needed in the cattle business. A commercial cow calf producer affects the marketability of their calves when they select their purebred breeding stock. Breeders have the option to produce cattle to meet their own desires and preferences but it is important from a marketing standpoint to produce cattle that meet the needs of potential buyers. And just as important is advertising your commitment to your customers' success. Producers who make an effort to attain a reputation for quality cattle will be in a better position to attract more buyers to their product.

Breeders are presented with a huge array of potential marketing and advertising mediums and it can be challenging to select the ones that earn you the most bang for your buck and still keep you within your advertising budget. The most common advertising method used by cattle producers is print. Advertising in breed publications and beef magazines or papers allows you to reach a wide audience at an affordable price. These mediums are targeted to your specific clientele (commercial and purebred beef producers) and are generally well read.

One of the best ways to advertise your operation and keep your name visible constantly is to have a business card ad in your breed publication. Business card ads are economical and many breeders use the business card listing in their breed publication as their telephone book. Without an ad in this section you lose the effect of being seen continuously and your quality-breeding program is not getting the promotion it deserves. Without an ad in this section some people may even wonder if you are still in business!

Breed publications and other industry publications also offer the option of larger size ads. These ads, when created properly can be very effective in generating interest in your program. It is important to have good quality pictures if you are going to picture specific animals, poor quality pictures can instantly destroy all positive promotion you were going to receive from your ad. It is also important to design the ad so that it is easy to follow and you get your key message across. You may be advertising your bull sale, a new herd-sire, private treaty sales or your success at a recent show. Just make sure that your ad is only focusing on one or two of these things – not everything. In advertising remember less is more! Keep your ads clean and simple so that potential buyers don't get lost in too many words or colors or pictures. For ideas on how to draft a creative and useful ad you can talk to your magazine publisher or look in other breed publications for examples of attractive and effective ads. And always remember to include your contact information in your ad, it seems simple, but also simple to overlook.

The decision to advertise should be an easy one. It promotes your quality-breeding program, it keeps your name in front of your customers and it generates more business for you, ultimately having a positive effect on your bottom-line. You must advertise to keep pace with your competition, both within the Blonde d'Aquitaine breed and the cattle industry.

*Alana Lunn is a former marketing & public relations specialist with one of Canada's top 3 beef breeds
Contact her at alanalunn@gmail.com*



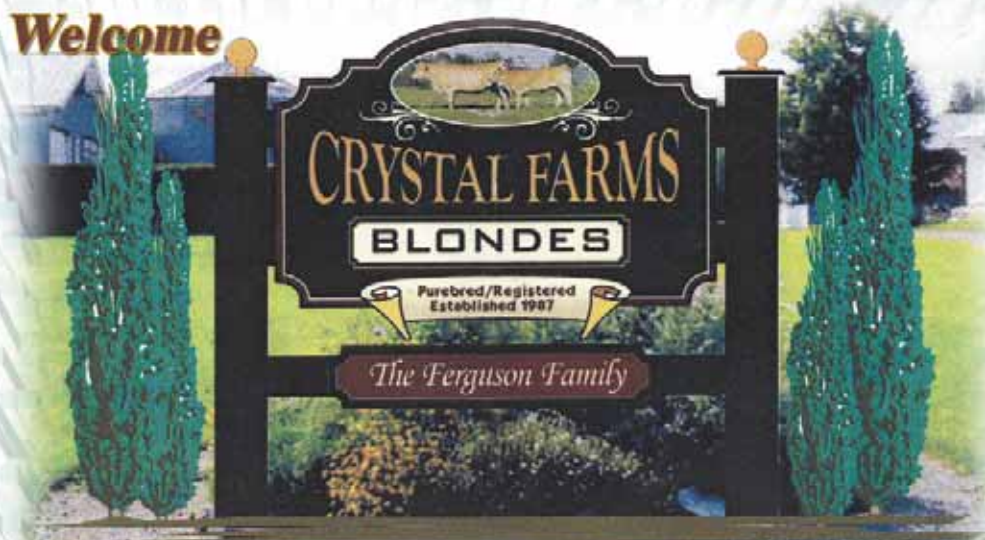
Alana Lunn

THANK YOU ...

- **Garth McClintock at Alberta Beef Magazine** for allowing us the opportunity to use photographs from your Blonde archive files. We very much appreciate the goodwill you have extended to Blonde breeders over the years.
- **Myrna Flesch (Assn. President)** for the many tireless hours devoted to the publishing of "The Blonde Connection" 2008.

• *Visitors Always Welcome*

- **PERFORMANCE TESTED HERD**
- **BIO**
- **BULLS, COWS, HEIFERS FOR SALE BY PRIVATE TREATY**



SANDY TOWN METHUSELAH

- **MAIN HERD SIRE AT CRYSTAL FARMS**
- **PEDIGREE: HEARTWOOD JEREMIAH X ROSENEATH DIANA**
- **“PRESIDENTS CUP” WINNER ‘03**



CRYSTAL TYLER 11T



- Sandy Town Methuselah x Lavelaine Miss Lacy
- Presently at Douglas Test Station - Ontario

CRYSTAL SPRING 22S (P)



- Sandy Town Methuselah x Crystal 2E
- New Owner - David Chevalier in Manitoba

Our Breeding is based upon PRODUCTION & DISPOSITION!

- We Cull for Temperament & Fertility
- We Breed A.I. to SPECIAL, ENCORE, and recently to RHEO LANCASTER 113L, a Polled Fullblood
- Special Thanks to the new owners of our cattle



PUREBRED/REGISTERED
ESTABLISHED 1987

CRYSTAL FARMS BLONDES

Paul & Mary Ellen Ferguson

R.R. 3 - 21 Crystal Road,
Jasper, Ontario K0G 1G0

Tel: 613-275-2422

Fax: 613-275-1713

QUALITY

Van Bakel Blondes

not quantity

is our specialty!!



BLONDE D'AQUITAINE BREEDING STOCK

- Horned • Polled
- Full Blood • Purebred

*genetics you
can count on!!*

At Van Bakel Blondes some of our main
A.I. sires include:

- ROSENEATH WILLIAM • ROSENEATH JUPITER
- WW CORBY • WSS REX • RHEO LANCASTER

• VAN BAKEL BLONDES •

Bill & Sue Van Bakel
R.R. #2,
Dublin, Ontario
N0K 1E0

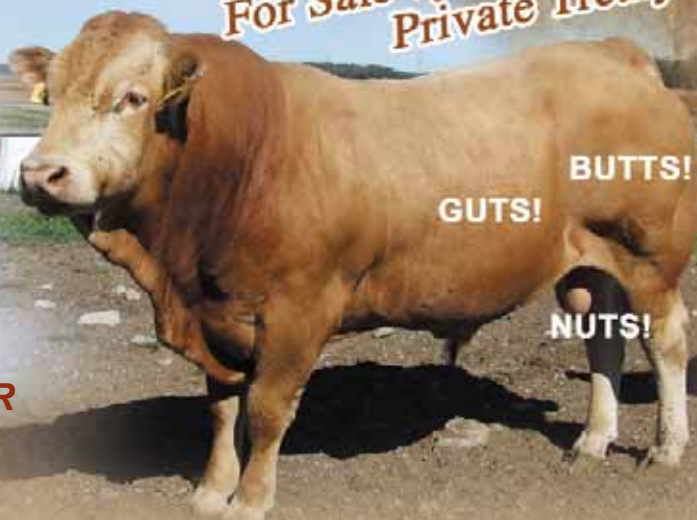
Phone: 519-345-2518

Email: vbb@ezlink.ca

Website: vanbakelblondes.ca

**OUR CATTLE ARE AVAILABLE FOR
VIEWING ON WEB CAM!**

*For Sale by
Private Treaty!!*



**We are selling by private treaty our current herd sire, DRM 12S
(Northern Justin x Roseneath Tami), two 2007 William bull calves and five 2007 William bred
heifers. Please Contact Us for More Information.**